



# ESSENZA

Fall/Winter 2023



# Our story

We are ESSENZA. Our desire is to inspire, stimulate and move you. We offer comfort to help you feel yourself at home and sleep better. Whoever or wherever you are, ESSENZA makes this possible. Show us who you are and what your style is. Be unique. Be yourself. Be ESSENZA. In our extensive home and interior collections, you will find everything you need to turn your home into a stylish, personal work of art; luxurious, elegant and exclusive.

We are constantly looking for innovation from all the things that makes life more beautiful. We are inspired by the people around us, by other cultures and traditions, by the colours, smells, and tastes that we experience, whether closer to home or from far away. Finally, we are also inspired by Mother Earth. Nature is an inexhaustible source of inspiration for us. In all her seasons she has so much beauty to offer. We mix and match all these new impressions, insights and ideas in our own studio, forming elegant, inspiring and expressive collections.

For more than 30 years we have been designing iconic home and interior collections with great care to create stylish looks with a unique twist. Whether you like rich floral prints, love checks and stripes or go for a simple uni bedding: at ESSENZA we have something beautiful for everyone.

At ESSENZA we believe in buying less, but better. That is why we produce high-quality, sustainable products that are our response to today's throwaway culture. We design and manufacture our collections with love, care and attention to both people and the environment. We do this because we believe it is extremely important that everyone has the chance to get a better night's sleep.







I love an *Indian Summer*. Those last days towards autumn when it's still pleasantly warm outside, but it gets dark a little earlier every evening. As much as I enjoy these evenings, I gradually long to escape the hustle and bustle and recharge at home.

In autumn, I crave for warm materials and comfort in preparation for winter. The desire to experience the feeling of coming home is strongest during the autumn-winter season. I create that feeling for myself by decorating my home with rich prints and textures, warm materials, and deep colours. I wear comfortable homewear and enjoy a cup of tea by candlelight with a warm blanket on the couch.

The Fall Winter '23 collection perfectly captures this feeling. Within 'An intimate escape,' you are taken to a place all to yourself, where you come home and recharge.

With a mix of classics and new rich prints, this collection surprises you while offering something familiar and recognizable at the same time. We cherish what is good and have been inspired by our icons to create new unique designs.

A special addition that I am incredibly proud of are the new designs for the ESSENZA for Mauritshuis collection. It is so special to offer the opportunity to bring a piece of art into your home with this collection.


The Arts & Crafts movement is also once again an inspiration, and gives an optimistic view of the future. 'An intimate escape' offers a moment of rest and reflection, to then prepare you for a year full of possibilities. This process is so incredibly important and should be lived lavishly.

Wishing you a beautiful winter.

Kind regards, Lieve groeten, Liebe Grüße,

Floor Smits  
Head of Brands

[www.essenzahome.nl](http://www.essenzahome.nl)  
[www.essenzahome.de](http://www.essenzahome.de)  
[info@essenzahome.nl](mailto:info@essenzahome.nl)  
[info@essenzahome.de](mailto:info@essenzahome.de)

 **@essenzahome**  
**@essenzahomedeuksland**



# Contents

---

## NEW COLLECTION

Collection story Fall/Winter 2023	<b>8</b>
Chapter 1: Deep Balance - mix & match: p. 72	<b>18</b>
Chapter 2: Society of Harmony - mix & match: p. 134	<b>82</b>
New! Bags & Towels	<b>144</b>

---

## OVERVIEW

Duvet covers	<b>148</b>
Fitted sheets	<b>172</b>
Duvets and Pillows	<b>180</b>
Accessories	<b>194</b>
Bath textiles	<b>222</b>
Bathrobes, Homecoats & Kimonos	<b>232</b>
Bags	<b>240</b>
Discover more	<b>244</b>
Merchandise	<b>246</b>

---

## INFORMATION

Sizing chart	<b>248</b>
About our fabrics	<b>252</b>
Our sustainability journey	<b>254</b>
Credits	<b>256</b>
Colophon	<b>258</b>





# An intimate escape





## *‘Welcome to your Dreams.’*

Aesthetics and comfort form the foundations for ESSENZA’s Fall/Winter home collection. An old country estate sets the scene with authentic details and allure, where charming details and warm, deep colours provide a touch of romance.

Designing our collections invokes a sense of intimacy. We want to provide comfort and serenity through our products and inspire you to dream. We want you to feel comfortable in this constantly changing world.

*‘An intimate escape’* takes you to the world of dreams, where day and night come together. A world where you can experience the relaxation of coming home with rich prints, warm colours and fine materials. Feel the sensation of a warm embrace. Experience the ultimate luxury of retiring into your own safe environment. Find beauty in the small things around you: dreams, books, art and natural elements. Take a moment to heal, renew your strength and hopeful energy.


Our home is the place where we can experience our dream world. Home is where we can feel safe and escape the chaos of daily life, where we spend time with ourselves and our loved ones. Home is where we recharge ourselves.

Rich prints, colours and materials are an essential part of our collections. We treasure the finer things in life. Our archive is stacked with iconic prints that inspire us to innovate. Yet, we remain faithful to classic works from the Dutch Masters from the Rijksmuseum and the Mauritshuis. The Arts and Crafts movement also remains an essential source of inspiration.

With a meticulous, refined touch and hand-made details, we have designed a fall collection with allure and drama. We let ourselves be inspired by Art Nouveau, an art movement that was particularly popular in Europe from the 1890s to 1914. This movement is characterised by an optimistic view of the world, faith in the future, and a taste for new, modern techniques. These principles are reflected in the elaborate ornamentation dominated by stylised flower and bird motifs. Organic yet subtly geometric. The most important source of inspiration for this art movement is nature, which is also an inexhaustible source of inspiration for ESSENZA throughout the seasons.

The prints in this collection are designed with elegant, flowing lines and graciously styled floral patterns in mind. Together, they create a blend of prints with maximum visual impact. We have added delicate solid mono-colour shades to counterbalance this effect.





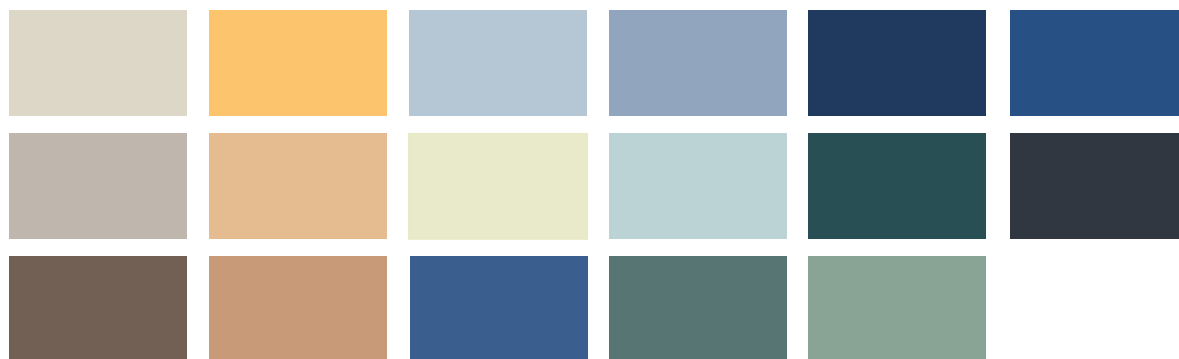
Two themes arise from an intimate escape, reflecting the sense of balance and strength you feel when coming home. These themes offer an endless variety of combinations. The prints create impact and have a sophisticated streak expressed through the use of colour, yet their designs are timeless; a sustainable, versatile collection of high-quality items that awaken the senses.



## Chapter 1: 'Deep Balance'

This theme stands for balance. Blue shades such as Chambray blue and Darkest blue and greens such as Reef Green and Comforting Green create a tranquil mental impression and a sense of familiarity. Hints of colour with Lemongrass and Cobalt Blue set the tone within this theme. These colours add a feeling of optimism to this otherwise calm and natural colour palette.

Night Blue is given centre stage in a tonal print and through hand-crafted needlework details such as broderie anglaise. These combinations provide allure and create a sense of balance. We add neutral tones with Vanilla and Oyster; you will also find these natural shades reflected in the accessories. The Karli print offers a colourful contrast within the collection. Its rich colour palette, in combination with the tranquil Reef Green, will help you dream the day away.

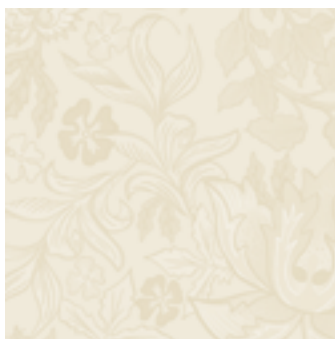


## Chapter 2: 'Society of Harmony'

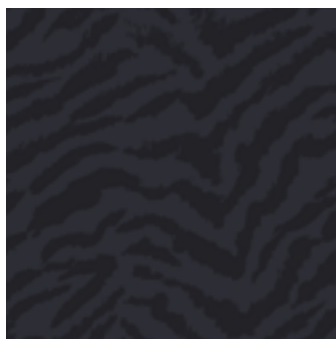
In this second theme, we see the power of harmony and trust. This theme is based on a balanced colour palette with space for creativity and imagination. The colours are sometimes bold without being too harsh, making it a very welcoming palette. We have used an elegant range of red, pink and purple shades, such as Plum Wine, Cherry red and Darling Pink. Green tones such as Moss and Forest Green provide stability. Olive works as the challenger within this theme.



## Chapter 1: *Deep Balance*



Felipa oyster (jacquard)



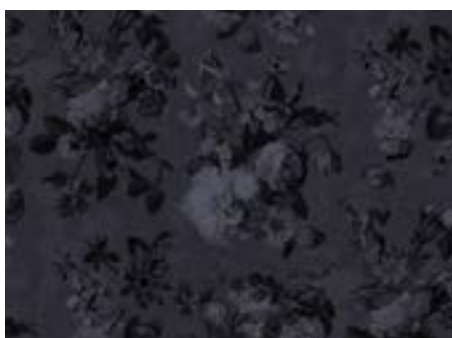
Belen nightblue (jacquard)



Leila chambray blue



Maen nightblue



Floor nightblue



Karli reef green



Tesse reef green



Yule chambray blue



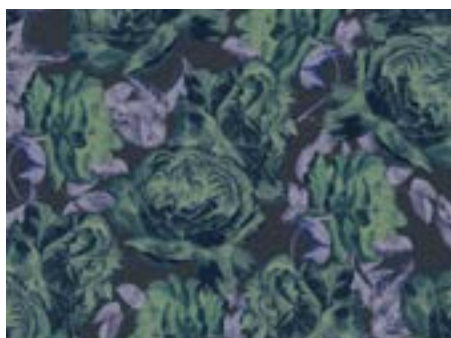
Odilia deep sea blue



Sol comforting green



Issadore darkest blue



Bernice darkest blue



Camille reef green

---

**PREMIUM****Felipa (jacquard)**

This jacquard design owes its stylised flower pattern to the *Ophelia* print inspired by the Arts and Crafts movement, an English art and industrial design movement from the second half of the 19th century. *Felipa* is an exquisitely detailed design, executed in a rich jacquard weave, giving this apparently tonal design depth and character and a subtle, luxurious appearance.

**Belen (jacquard)**

The *Belen* design is a subtle zebra-like jacquard. The naturally rounded stripes add extra depth with this jacquard weave, resulting in a voluminous print.

---

**SIGNATURE****Floor**

*Floor* is a version of our bestselling print, *Fleur*, but designed using tonal colours, resulting in a beautifully subtle and classic motif with a contemporary look. *Floor* owes its allure to a quiet simplicity with a tone-on-tone print that retains the depth of this iconic flower print.

**Karli**

The *Karli* print is a design with an iconic floral print, as you would expect from ESSENZA. The designers have created a composition of flowers from different paintings from the Dutch Masters archive. The print showcases countless, finely-painted flowers from all seasons, most of which were relatively rare during the time of the Dutch Masters. This print features a rich and varied colour palette, making it a source of endless fascination.

**Tesse**

*Tesse* is a decorative ornamental print. Ornaments, or 'versierselen' as they were known in the 17th-century Netherlands, were commonly used at the time. Ornamental shapes were characterised by stylisation, symmetry or the repetition of a motif, all three of which are clearly visible in this *Tesse* print. The original of this print is an etching dating back to 1817 from the Rijksmuseum archives.

---

**SEASONAL****Issadore**

*Issadore* is an ornamental floral print in four colours; the lighter colour accents add lustre to the ornaments. The inspiration for this print is an etching from the Rijksmuseum archives and dating back to 1610 by Christoph Jemnitzer. The elegantly curling ornamental flowers give this print a sophisticated and opulent appearance.

**Bernice**

The *Bernice* print is a romantic rose print with an innovative colour scheme. The roses used in the pattern are inspired by a 1688 drawing by Johan Teyler (Rijksmuseum) which ESSENZA has given a contemporary look through the creative use of colour.

**Leila**

The *Leila* print is the modern-day sister of the *Karli* print, the type of iconic floral print you would expect from ESSENZA. The designers have created a composition of flowers from different paintings from the Dutch Masters archive. The print displays countless, finely-painted flowers from all seasons, most of which were relatively rare during the time of the Dutch Masters. The use of three main colours gives this print a modern yet classic feel.

**Maen**

*Maen* is made with a needlework technique called broderie anglaise, which originated in 16th-century Eastern Europe. This type of needlework technique owes its name to the fact that it gained tremendous popularity in England. This technique is characterised by patterns created by round holes, or eyelets, that are cut into the fabric and then finished by embroidering around them with buttonhole stitch, an effect that is best achieved on pure cotton fabrics. This technique is highly suitable for nightwear and bedding.

**Yule**

*Yule* is covered with a sunflower print that is repeated across the canvas. These sunflowers stem from a 1688 engraving from the Rijksmuseum and are made up of countless fine lines that add extra depth to the flowers. The well-known yellow colour has been replaced with a contemporary shade of blue to add a modern twist to this 17th-century engraving.

**Odilia**

For this print, we drew inspiration from the gorgeous 'tapestry tablecloth with flowers scattered in the middle' from 1650 found in the Rijksmuseum. The woven velvet effect is still visible in the flowers, and the playful positioning of the flowers makes this a rich print.

**Sol**

*Sol* is a geometric print with flowing lines in a unique colour composition. This print's initial starting point was our iconic print, *Fleur*. All the colours in this rich and complex flower print have been drawn out into lines. *Sol* owes the variations in line thickness to the various colour volumes in the *Fleur* print. By applying curves to these lines, the *Sol* print was born.

**Camille**

The *Camille* print is reminiscent of the colourful world of rose gardens in bloom with a hand-drawn rose print characterised by a vintage vibe. The large roses alternate with smaller roses, presented in great detail. Floral prints, a recurring theme in ESSENZA's collection, refer to the natural world as a source of inspiration.



## Chapter 2: Society of Harmony



Leila forest green



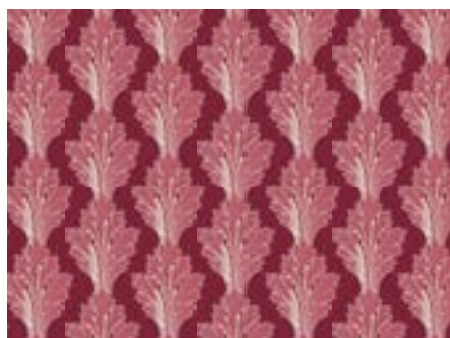
Minte olive



Karli purple tulip



Karli darling pink



Tesse cherry red



Ophelia plum wine



Teada moss (jacquard)



Teada grey (jacquard)



Sol antique pink



Bernice beachwood white



Camille plum wine

---

**PREMIUM****Leila**

The *Leila* print is the modern-day sister of the Karli print, the type of iconic floral print you would expect from ESSENZA. The designers have created a composition of flowers from different paintings from the Dutch Masters archive. The print displays countless, finely-painted flowers from all seasons, most of which were relatively rare during the time of the Dutch Masters. The use of three main colours gives this print a modern yet classic feel.

---

**SIGNATURE****Karli**

The *Karli* print is a design with an iconic floral print, as you would expect from ESSENZA. The designers have created a composition of flowers from different paintings from the Dutch Masters archive. The print showcases countless, finely-painted flowers from all seasons, most of which were relatively rare during the time of the Dutch Masters. This print features a rich and varied colour palette, making it a source of endless fascination.

**Tesse**

*Tesse* is a decorative ornamental print. Ornaments, or 'versierselen' as they were known in the 17th-century Netherlands, were commonly used at the time. Ornamental shapes were characterised by stylisation, symmetry or the repetition of a motif, all three of which are clearly visible in this *Tesse* print. The original of this print is an etching dating back to 1817 from the Rijksmuseum archives.

**Ophelia**

This gorgeous *Ophelia* print has become another icon of the ESSENZA collection. The print is inspired by the Arts and Crafts movement, an English art and industrial design movement from the second half of the 19th century. *Ophelia* exudes a sophisticated, rich ambience. The print is designed in exquisite detail and has a unique colour gradient, making this print elegant and very refined.

---

**SEASONAL****Bernice**

The *Bernice* print is a romantic rose print with an innovative colour scheme. The roses used in the pattern are inspired by a 1688 drawing by Johan Teyler (Rijksmuseum) which ESSENZA has given a contemporary look through the creative use of colour.

**Teada (jacquard)**

This jacquard was originally a hand-painted print, the *Teade*, showing a contemporary take on a traditional chequered pattern. The chequers provide depth and detail, and the brushed effect makes the lines slightly less even than you would expect from a traditional chequer print. This print is executed with a jacquard weave instead of a full-colour print, giving it a softer and more tranquil look for a perfect balance. With the *Teada*, your eye is drawn to a different element every time, thanks to the jacquard weave which gives this fabric a mesmerising effect.

**Sol**

*Sol* is a geometric print with flowing lines in a unique colour composition. This print's initial starting point was our iconic print, *Fleur*. All the colours in this rich and complex flower print have been drawn out into lines. *Sol* owes the variations in line thickness to the various colour volumes in the *Fleur* print. By applying curves to these lines, the *Sol* print was born.

**Camille**

The *Camille* print is reminiscent of the colourful world of rose gardens in bloom with a hand-drawn rose print characterised by a vintage vibe. The large roses alternate with smaller roses, presented in great detail. Floral prints, a recurring theme in ESSENZA's collection, refer to the natural world as a source of inspiration.

## Chapter 2: Society of Harmony Mauritshuis



Gwendolyn darkest green



Clemence cumin yellow



Amadee black



Amadee sand



Daffodils Reunited beachwood white

### PREMIUM

#### Gwendolyn

*Gwendolyn* provides the backdrop for Willem van Aelst's Flower Still Life with a Timepiece from 1663. A true showpiece! Van Aelst's flower still lifes differ from those of his predecessors. Instead of painting symmetrical bouquets, he arranged them along a diagonal. The resulting bouquet's dynamic intensity makes it highly suitable for a large canvas such as a duvet cover. The contrast between light and dark makes this work extra unique – a timeless centrepiece.

#### Clemence

This flower still life by Jan van Huysum (1682 - 1749) measures only 21 x 27 cm in real life. It is a unique piece by Jan van Huysum, who painted primarily large, extravagant bouquets. *Clemence* presents this painting in larger-than-life form, highlighting the gorgeous details from this masterpiece in their full glory. The golden sheen and the beautifully painted delicate roses are a feast for the eye.

### SIGNATURE

#### Amadee

This design features a variety of elements from four paintings in the Mauritshuis collection. Various eye-catching features from the works *Fruit Still Life* by Balthasar van der Ast, 1620, *Narcissi*, *Periwinkle and Violets in an Ewer* by Ludger Tom Ring the Younger, 1562, *Flowers in a Wan-Li Vase* by Jan Breughel the Elder, 1610-1615, and *Flowers in a Glass Flask* by Jacob de Gheyn II, 1612 are brought together in a new composition. *Amadee* displays vases with opulent flower bouquets with individual fruit and flower elements. These components' spacious yet playful placement results in a contemporary design that maintains a focus on the individual elements.

#### Daffodils Reunited

*Daffodils Reunited* brings the flowers, which are based on the Ludger Tom Ring the Younger painting, to life on a dark background. Refined, elegant and classical in form. Now that's what we call a masterpiece.







Chapter 1:

# Deep Balance

*This theme stands for balance. Blue shades such as Chambray blue and Darkest blue and greens such as Reef Green and Comforting Green create a tranquil mental impression and a sense of familiarity. Hints of colour with Lemongrass, and Cobalt Blue set the tone within this theme. These colours add a feeling of optimism to this otherwise calm and natural colour palette.*











PREMIUM

## Felipa oyster

*100% bamboo viscose, 300TC*

*100% bamboe viscose, 300TC*

*100% Bambus-Viskose, 300TC*

This jacquard design owes its stylised flower pattern to the Ophelia print inspired by the Arts and Crafts movement, an English art and industrial design movement from the second half of the 19th century. Felipa is an exquisitely detailed design, executed in a rich jacquard weave, giving this apparently tonal design depth and character and a subtle, luxurious appearance. Turn the duvet over to reveal the unicoloured side of the cover.

Felipa is made from 100% bamboo viscose. This fabric is made by processing bamboo fibres into a fine textile fabric using the viscose production process. Bamboo viscose feels remarkably soft and has excellent heat-regulating and moisture-wicking properties, making it delightfully cool in the summer and comfortably warm in the winter. Bamboo is the fastest-growing plant in the world. It does not require fertilisers, pesticides, or other chemicals to grow, making its production sustainable. A fine choice year-round.

**Take a look at the mix and match (P. 72) for the complete combination with accessories.**







PREMIUM

## Belen nightblue

*100% bamboo viscose, 300TC*

*100% bamboe viscose, 300TC*

*100% Bambus-Viskose, 300TC*

The Belen design is a subtle zebra-like jacquard. The naturally rounded stripes add extra depth with this jacquard weave, resulting in a voluminous design. Turn the duvet over to reveal the unicoloured side of the cover.

Belen is made from 100% bamboo viscose. Bamboo viscose is made by processing bamboo fibres into a fine textile fabric using the viscose production process. Bamboo viscose feels remarkably soft and has excellent heat-regulating and moisture-wicking properties, making it delightfully cool in the summer and comfortably warm in the winter. Bamboo is the fastest-growing plant in the world. It does not require fertilisers, pesticides, or other chemicals to grow, making its production sustainable. A fine choice year-round.

**Take a look at the mix and match (P. 72) for the complete combination with accessories.**











**Reva Leila soft chambray**

*woven top long sleeve*

*81% viscose / 17% modal / 2% elastane*

**Mare Leila soft chambray**

*trousers long*

*81% viscose / 17% modal / 2% elastane*











PREMIUM

CAMPAIGN

## Leila chambray blue

*100% organic cotton satin, GOTS certified, 300TC, with piping*

*100% biologisch katoen satijn, GOTS gecertificeerd, 300TC, met piping*

*100 % Bio-Baumwollsatin, GOTS-zertifiziert, 300TC, mit Paspel*

The Leila print is the modern-day sister of the Karli print, the type of iconic floral print you would expect from ESSENZA. The designers have created a composition of flowers from different paintings from the Dutch Masters archive. The print showcases countless, finely-painted flowers from all seasons, most of which were relatively rare during the time of the Dutch Masters. The use of three main colours gives this print a modern yet classic feel. Turn Leila over to reveal the solid background colour, balancing out the entire cover. The edges of this duvet cover and the pillowcases are lined with elegant piping for a finishing touch.

The fine threads, in combination with the satin weave and the high 300-thread count, gives the duvet cover extra sheen and a delightful feel. This results in a smooth and strong GOTS-certified organic cotton satin. The international GOTS certificate guarantees the use of organically grown cotton and ensures that cotton production occurs in an environmentally friendly and socially responsible manner. In other words, better for your skin, the planet, and the employees who make this fabric. This fabric creates a velvety soft duvet cover that will last many years and is guaranteed to provide a good night's rest.

**Take a look at the mix and match (P. 72) for the complete combination with accessories.**









PREMIUM

CAMPAIGN

## Maen nightblue

*100% cotton broderie anglaise*

*100% katoen broderie anglaise*

*100% Baumwolle mit Stickerei Anglaise*

This premium night-blue duvet cover guarantees you a good night's rest. The duvet cover has a 'regal' look with its deep, solid, dark-blue colour combined with richly embroidered trimming. Maen brings freshness, atmosphere, and romance to the bedroom. The cover is trimmed with refined embroidered edging on the duvet cover sides and bottom and around the pillowcase. This is ESSENZA's way of returning to traditional artisanal techniques. Broderie anglaise is characterised by patterns created by round holes, or eyelets, that are cut into the fabric and then finished by embroidering around them with buttonhole stitch. Broderie fits in perfectly with a refined interior. The duvet cover is made from 100% cotton.

**Take a look at the mix and match (P. 74) for the complete combination with accessories.**



Suki Tilia darkest blue  
woven top short sleeve  
100% cotton

Erica Tilia darkest blue  
trousers long  
100% cotton



**Suki Tilia darkest blue**

*woven top short sleeve*

*100% cotton*

**Erica Tilia darkest blue**

*trousers long*

*100% cotton*







## Floor nightblue

*100% cotton satin*

*100% katoen satijn*

*100% Baumwolle Satin*

Floor is a version of our bestselling print, Fleur, but designed using tonal colours, resulting in a beautifully subtle and classic print that instantly gives every bedroom a chic look. Floor owes its allure to a quiet simplicity with a tone-on-tone print that retains the depth of this iconic floral print. This luxurious design is a perfect way to create a classic yet contemporary look with a serene atmosphere in the bedroom. Turn the duvet over to reveal a tranquil solid cover in the same colour.

Cotton satin is, without a doubt, our favourite fabric for bedding. Cotton satin is made from 100% natural cotton and therefore has the same characteristics as other cotton fabrics: breathability and moisture-wicking properties. A cotton satin duvet cover feels much softer and smoother than a 'normal' cotton cover due to the special satin weave that gives the fabric its sheen. The result is a fabric that looks and feels luxurious.

**Take a look at the mix and match (P. 74) for the complete combination with accessories.**







Floor nightblue carpet





1. Tesse reef green pouf - 2. Floor nightblue carpet - 3. Mads dark teal cushion

# Karli reef green

100% cotton satin

100% katoen satijn

100% Baumwolle Satin

The Karli print is a design with an iconic floral print as you would expect from ESSENZA. The designers have created a composition of flowers from different paintings from the Dutch Masters archive. The print showcases countless, finely-painted flowers from all seasons, most of which were relatively rare during the time of the Dutch Masters. This print features a rich and varied colour palette, making it a source of endless fascination. Turn the duvet over for a beautiful solid cover in the print's background colour. The Karli will automatically function as a unique accent in the bedroom by styling this side up.

Cotton satin is, without a doubt, our favourite fabric for bedding. Cotton satin is made from 100% natural cotton and therefore has the same characteristics as other cotton fabrics: breathability and moisture-wicking properties. A cotton satin duvet cover feels much softer and smoother than a 'normal' cotton cover due to the special satin weave that gives the fabric its sheen. The result is a fabric that looks and feels luxurious.

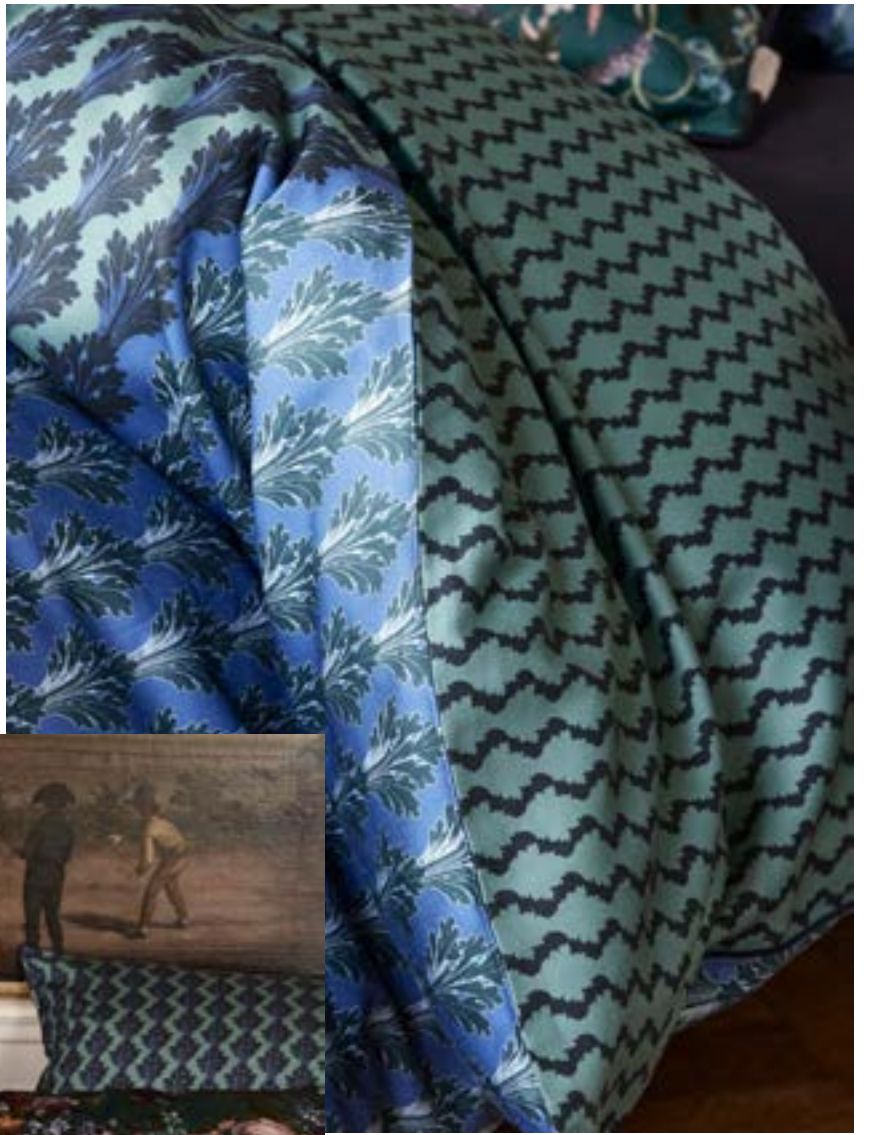
**Take a look at the mix and match (P. 74) for the complete combination with accessories.**













# Tesse reef green

100% cotton satin with piping  
100% katoen satijn met piping  
100% Baumwolle Satin mit Paspel

Tesse is a decorative ornamental print. Ornaments, or 'versierselen' as they were known in the 17th-century Netherlands, were commonly used at the time. Ornamental shapes were characterised by stylisation, symmetry or the repetition of a motif, all three of which are clearly visible in this Tesse print. The original of this print is an etching dating back to 1817 from the Rijksmuseum archives. On this duvet cover, the Tesse design is positioned as a panel print with side panels in a different colour. As a finishing touch, the edges of this duvet cover and pillowcases are trimmed with a piping. Turn the Tesse duvet over to discover a subtle two-tone wavy pattern.

Cotton satin is, without a doubt, our favourite fabric for bedding. Cotton satin is made from 100% natural cotton and therefore has the same characteristics as other cotton fabrics: breathability and moisture-wicking properties. A cotton satin duvet cover feels much softer and smoother than a 'normal' cotton cover due to the special satin weave that gives the fabric its sheen. The result is a fabric that looks and feels luxurious.

**Take a look at the mix and match (P. 74) for the complete combination with accessories.**





**Kae Karli deep sea blue**

*top long sleeve*

96% Lenzing™ EcoVero™ / 4% elastane

**Jules Karli deep sea blue**

*trousers long*

96% Lenzing™ EcoVero™ / 4% elastane













## Yule chambray blue

*100% cotton satin*

*100% katoen satijn*

*100% Baumwolle Satin*

Yule is covered with a sunflower print that is repeated across the canvas. These sunflowers stem from a 1688 engraving from the Rijksmuseum and are made up of countless fine lines that add extra depth to the flowers. The well-known yellow colour has been replaced with a contemporary shade of blue to add a modern twist to this 17th-century engraving. The small modern flowers gracing the other side of the duvet cover and the pillowcases, in combination with this print, provide the perfect finish.

Cotton satin is, without a doubt, our favourite fabric for bedding. Cotton satin is made from 100% natural cotton and therefore has the same characteristics as other cotton fabrics: breathability and moisture-wicking properties. A cotton satin duvet cover feels much softer and smoother than a 'normal' cotton cover due to the special satin weave that gives the fabric its sheen. The result is a fabric that looks and feels luxurious.

**Take a look at the mix and match (P. 76) for the complete combination with accessories.**









1. Furry reef green plaid - 2. Tesse reef green carpet - 3. Mads furry reef green cushion









## Odilia deep sea blue

*100% cotton satin*

*100% katoen satijn*

*100% Baumwolle Satin*

For this print, we drew inspiration from the gorgeous 'tapestry tablecloth with flowers scattered in the middle' from 1650 in the Rijksmuseum. The woven velvet effect is still visible in the flowers, and the playful positioning of the flowers makes this a rich print. Turn the duvet over to reveal a repeated pattern featuring a small flower from the print. The pillowcase has a beautiful, elaborate trim on the bottom.

Cotton satin is, without a doubt, our favourite fabric for bedding. Cotton satin is made from 100% natural cotton and therefore has the same characteristics as other cotton fabrics: breathability and moisture-wicking properties. A cotton satin duvet cover feels much softer and smoother than a 'normal' cotton cover due to the special satin weave that gives the fabric its sheen. The result is a fabric that looks and feels luxurious.

**Take a look at the mix and match (P. 76) for the complete combination with accessories.**

# Sol comforting green

*100% cotton satin*

*100% katoen satijn*

*100% Baumwolle Satin*

Sol is a geometric print with flowing lines in a unique colour composition. This print's initial starting point was our iconic print, Fleur. All the colours in this rich and complex flower print have been drawn out into lines. The Sol owes the variations in line thickness to the various colour volumes in the Fleur print. By applying curves to these lines, the Sol print was born. Turn the duvet over for a beautiful solid cover in the print's background colour.

Cotton satin is, without a doubt, our favourite fabric for bedding. Cotton satin is made from 100% natural cotton and therefore has the same characteristics as other cotton fabrics: breathability and moisture-wicking properties. A cotton satin duvet cover feels much softer and smoother than a 'normal' cotton cover due to the special satin weave that gives the fabric its sheen. The result is a fabric that looks and feels luxurious.

**Take a look at the mix and match (P. 76) for the complete combination with accessories.**









## Otis anthracite & stone\*

*100% organic cotton jersey, GOTS certified with piping*

*100% biologisch katoen jersey, GOTS gecertificeerd met piping*

*100% Bio-Baumwolljersey, GOTS-zertifiziert mit Paspel*

Otis is a single-colour duvet cover made from cotton jersey. Jersey is knitted, making it even more supple than woven fabrics. Jersey has a very soft and smooth feel and appearance, just like your favourite t-shirt. This breathable fabric is made from 100% GOTS-certified cotton. The international GOTS certificate guarantees the use of organically grown cotton and ensures that cotton production occurs in an environmentally friendly and socially responsible manner. In other words, better for your skin, the planet, and the employees who make this fabric. The sides of this duvet cover and the pillowcases are lined with piping for a finishing touch. Cotton jersey may feel warm, but it is similar to cotton satin and cotton percale in heat retention, making it highly suitable as a bedding material for all seasons.

\*Available in the following sizes: 140x220 cm, 200x220 cm, 240x220 cm, 260x220 cm

**Take a look at the mix and match (P. 76 & 78) for the complete combination with accessories.**







**Demi Issadore darkest blue**  
*top long sleeve*  
95% polyester / 5% elastane

**Dahlia Issadore darkest blue**  
*trousers long*  
95% polyester / 5% elastane







# Issadore darkest blue

*100% cotton satin*

*100% katoen satijn*

*100% Baumwolle Satin*

Issadore is an ornamental floral print in four colours; the lighter colour accents add lustre to the ornaments. The inspiration for this print is an etching from the Rijksmuseum archives and dating back to 1610 by Christoph Jemnitzer. The elegantly curling ornamental flowers give this print a sophisticated and opulent appearance. Turn the duvet over to reveal the print in another beautifully matching colourway.

Cotton satin is, without a doubt, our favourite fabric for bedding. Cotton satin is made from 100% natural cotton and therefore has the same characteristics as other cotton fabrics: breathability and moisture-wicking properties. A cotton satin duvet cover feels much softer and smoother than a 'normal' cotton cover due to the special satin weave that gives the fabric its sheen. The result is a fabric that looks and feels luxurious.

**Take a look at the mix and match (P. 78) for the complete combination with accessories.**





# Bernice darkest blue

100% cotton twill

100% katoen twill

100% Baumwolle Twill



The Bernice print is a romantic rose print with an innovative colour scheme. The roses used in the pattern are inspired by a 1688 drawing by Johan Teyler (Rijksmuseum), which ESSENZA has given a contemporary look through the creative use of colour. Turn Bernice over to reveal the Camille print in two-tone hand-painted roses to balance out the cover.

Bernice is made from cotton twill with a peach finish, a delightfully supple, inelastic fabric with a twill weave that exposes the subtle diagonals in the fabric. This weave also makes the material exceptionally strong. In other words, an ideal combination for long-lasting bedding products. The peach finish, obtained by lightly brushing the fabric for a soft, fuzzy feel, makes this material perfect for colder days.

**Take a look at the mix and match (P. 78) for the complete combination with accessories.**











**Marie Camille reef green**

*woven top long sleeve*

*65% modal / 33% cotton / 2% elastane*

**Mare Camille reef green**

*trousers long*

*65% modal / 33% cotton / 2% elastane*



# Camille reef green

100% cotton twill

100% katoen twill

100% Baumwolle Twill

The Camille print is reminiscent of the colourful world of rose gardens in bloom with a hand-drawn rose print characterised by a vintage vibe. The large roses alternate with smaller roses, presented in great detail. Floral prints, a recurring theme in ESSENZA's collection, refer to the natural world as a source of inspiration. Turn the duvet over to see the Camille print in a different, reversed colourway for a playful mix-and-match look.

Camille is made from cotton twill with a peach finish, a delightfully supple, inelastic fabric with a twill weave that exposes the subtle diagonals in the fabric. This weave also makes the material exceptionally strong. In other words, an ideal combination for long-lasting bedding products. The peach finish, obtained by lightly brushing the fabric for a soft, fuzzy feel, makes this material perfect for colder days.

**Take a look at the mix and match (P. 78) for the complete combination with accessories.**











## **Zeva oyster**

*100% cotton flannel, with double stitch finish*

*100% katoen flannel, met double stitch afwerking*

*100% Baumwolle Flanell, mit Doppelnaht*

Zeva is a single-colour duvet cover made from cotton flannel. Flannel differs from plain cotton as the yarn is loosely spun into a linen or twill weave. The fabric is then brushed, giving it a soft, woolly and cosy feel. This soft fabric quickly adjusts to your body temperature, keeping you warm throughout the night. Moreover, the thick material retains heat, while the quality cotton fibre gives the fabric breathability and moisture-wicking properties. Perfect for cold nights.

**Take a look at the mix and match (P. 80) for the complete combination with accessories.**





## **Zeva elephant grey**

*100% cotton flannel, with double stitch finish*

*100% katoen flannel, met double stitch afwerking*

*100% Baumwolle Flanell, mit Doppelnaht*

Zeva is a single-colour duvet cover made from cotton flannel. Flannel differs from plain cotton as the yarn is loosely spun into a linen or twill weave. The fabric is then brushed, giving it a soft, woolly and cosy feel. This soft fabric quickly adjusts to your body temperature, keeping you warm throughout the night. Moreover, the thick material retains heat, while the quality cotton fibre gives the fabric breathability and moisture-wicking properties. Perfect for cold nights.

**Take a look at the mix and match (P. 80) for the complete combination with accessories.**









## **Zeva** nightblue

*100% cotton flannel, with double stitch finish*

*100% katoen flannel, met double stitch afwerking*

*100% Baumwolle Flanell, mit Doppelnaht*

Zeva is a single-colour duvet cover made from cotton flannel. Flannel differs from plain cotton as the yarn is loosely spun into a linen or twill weave. The fabric is then brushed, giving it a soft, woolly and cosy feel. This soft fabric quickly adjusts to your body temperature, keeping you warm throughout the night. Moreover, the thick material retains heat, while the quality cotton fibre gives the fabric breathability and moisture-wicking properties. Perfect for cold nights.

**Take a look at the mix and match (P. 80) for the complete combination with accessories.**





## Zeva dusty green

*100% cotton flannel, with double stitch finish*

*100% katoen flannel, met double stitch afwerking*

*100% Baumwolle Flanell, mit Doppelnaht*

Zeva is a single-colour duvet cover made from cotton flannel. Flannel differs from plain cotton as the yarn is loosely spun into a linen or twill weave. The fabric is then brushed, giving it a soft, woolly and cosy feel. This soft fabric quickly adjusts to your body temperature, keeping you warm throughout the night. Moreover, the thick material retains heat, while the quality cotton fibre gives the fabric breathability and moisture-wicking properties. Perfect for cold nights.

**Take a look at the mix and match (P. 80) for the complete combination with accessories.**



# Mix & Match

Deep Balance

P. 21



**FELIPA oyster**  
duvet cover set



**MINTE oyster**  
duvet cover set



**MADS FURRY vanilla**  
cushion



**JULIA sand**  
cushion



**JULIA sand**  
plaid/quilt

P. 23



**BELEN nightblue**  
duvet cover set



**MAEN nightblue**  
duvet cover set



**MADS FURRY reef green**  
cushion



**JULIA nightblue**  
plaid/quilt



**JULIA nightblue**  
cushion

P. 28



**LEILA chambray blue**  
duvet cover set



**MAEN nightblue**  
duvet cover set



**MADS dark teal**  
cushion

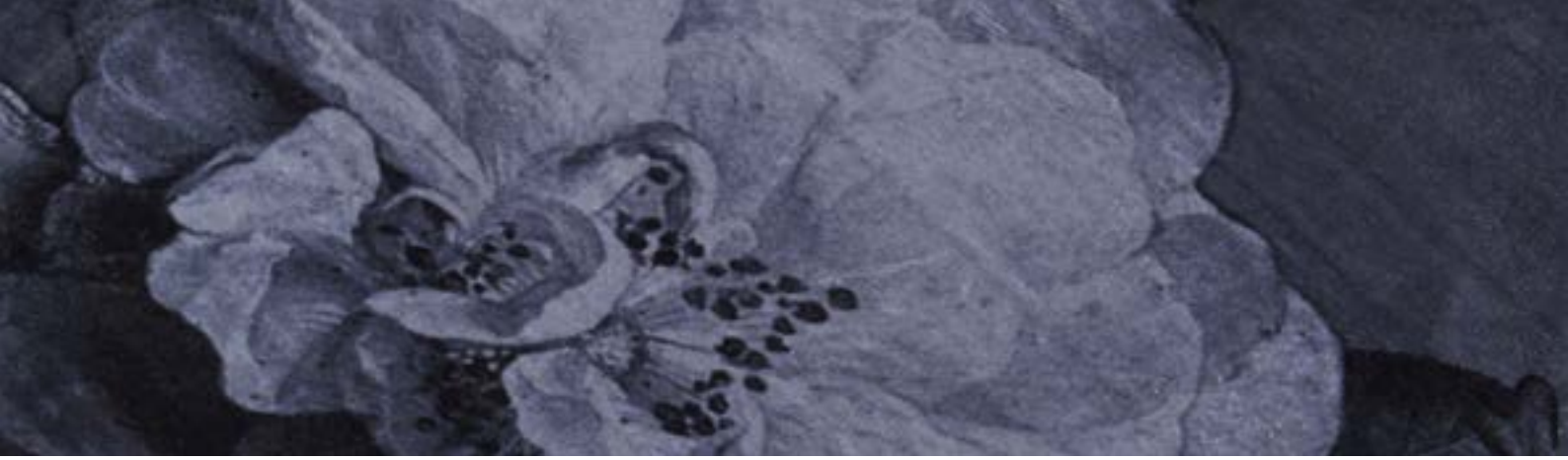


**FURRY reef green**  
cushion



**FURRY reef green**  
plaid





**ISABELLE balsam**  
cushion



**ISABELLE balsam**  
plaid/quilt



**ISABELLE balsam**  
pouf



**ISABELLE balsam**  
carpet



**FITTED SHEETS**  
oyster, denim, nightblue



**ISABELLE balsam**  
cushion



**ISABELLE balsam**  
plaid/quilt



**ISABELLE balsam**  
pouf



**ISABELLE balsam**  
carpet



**FITTED SHEETS**  
café noir, denim, nightblue



**FURRY nightblue**  
roll cushion



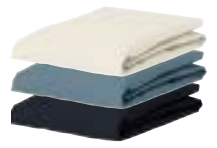
**MADS FURRY nightblue**  
cushion



**TESSE reef green**  
pouf



**TESSE reef green**  
carpet



**FITTED SHEETS**  
oyster, denim, nightblue

P. 31



**MAEN nightblue**  
duvet cover set



**FLOOR nightblue**  
duvet cover set



**MADS FURRY nightblue**  
cushion



**JULIA café noir**  
cushion



**JULIA café noir**  
plaid/quilt

P. 35



**FLOOR nightblue**  
duvet cover set



**MAEN nightblue**  
duvet cover set



**MADS dark teal**  
cushion



**FURRY reef green**  
cushion



**FURRY reef green**  
plaid

P. 38



**KARLI reef green**  
duvet cover set



**TESSE reef green**  
duvet cover set



**MADS dark teal**  
cushion



**FURRY reef green**  
cushion



**FURRY reef green**  
plaid

P. 41



**TESSE reef green**  
duvet cover set



**BELEN nightblue**  
duvet cover set



**MADS dark teal**  
cushion



**FURRY nightblue**  
cushion



**FURRY nightblue**  
plaid



**FURRY nightblue**  
roll cushion



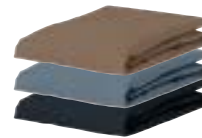
**FURRY nightblue**  
cushion



**FURRY nightblue**  
plaid



**FLOOR nightblue**  
carpet



**FITTED SHEETS**  
café noir, denim, nightblue



**JULIA nightblue**  
cushion



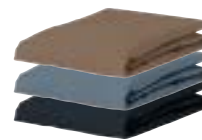
**JULIA nightblue**  
plaid/quilt



**TESSE reef green**  
pouf



**FLOOR nightblue**  
carpet



**FITTED SHEETS**  
café noir, denim, nightblue



**JULIA nightblue**  
cushion



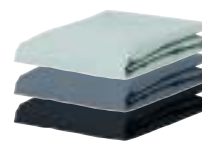
**KARLI reef green**  
cushion



**KARLI reef green**  
pouf



**TESSE reef green**  
carpet



**FITTED SHEETS**  
dusty green, denim, nightblue



**JULIA nightblue**  
cushion



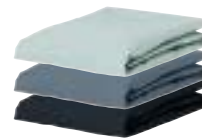
**JULIA nightblue**  
plaid/quilt



**TESSE reef green**  
pouf



**TESSE reef green**  
carpet



**FITTED SHEETS**  
dusty green, denim, nightblue



P. 45



**YULE chambray blue**  
duvet cover set



**MINTE nightblue**  
duvet cover set



**FURRY nightblue**  
roll cushion



**JULIA sand**  
cushion



**JULIA sand**  
plaid/quilt

P. 49



**ODILIA deep sea blue**  
duvet cover set



**TESSE reef green**  
duvet cover set



**MAD5 FURRY vanilla**  
cushion



**JULIA sand**  
cushion



**JULIA sand**  
plaid/quilt

P. 50



**SOL comforting green**  
duvet cover set



**MINTE nightblue**  
duvet cover set



**MAD5 dark teal**  
cushion



**FURRY nightblue**  
cushion



**FURRY nightblue**  
plaid

P. 52



**OTIS anthracite**  
duvet cover set



**MINTE denim**  
duvet cover set



**MAD5 FURRY vanilla**  
cushion



**JULIA sand**  
cushion



**JULIA sand**  
plaid/quilt



**FURRY nightblue**  
cushion



**FURRY nightblue**  
plaid



**TESSE reef green**  
pouf



**FLOOR nightblue**  
carpet



**FITTED SHEETS**  
oyster, denim, nightblue



**MADS FURRY bright terra**  
cushion



**FURRY reef green**  
cushion



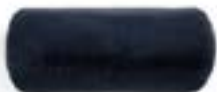
**FURRY reef green**  
plaid



**TESSE reef green**  
carpet



**FITTED SHEETS**  
oyster, olive, nightblue



**FURRY nightblue**  
roll cushion



**JULIA nightblue**  
cushion



**JULIA nightblue**  
plaid/quilt



**FLOOR nightblue**  
carpet



**FITTED SHEETS**  
oyster, denim, nightblue



**ISABELLE balsam**  
cushion



**ISABELLE balsam**  
plaid/quilt



**ISABELLE balsam**  
pouf



**ISABELLE balsam**  
carpet



**FITTED SHEETS**  
oyster, denim, nightblue

P. 52



**OTIS stone**  
duvet cover set



**TESSE reef green**  
duvet cover set



**MADS FURRY vanilla**  
cushion



**JULIA sand**  
cushion



**JULIA sand**  
plaid/quilt

P. 57



**ISSADORE darkest blue**  
duvet cover set



**TESSE reef green**  
duvet cover set



**MADS dark teal**  
cushion



**JULIA café noir**  
cushion



**JULIA café noir**  
plaid/quilt

P. 58



**BERNICE darkest blue**  
duvet cover set



**GUY silver**  
duvet cover set



**MADS FURRY nightblue**  
cushion



**FURRY nightblue**  
cushion



**FURRY nightblue**  
plaid

P. 62



**CAMILLE reef green**  
duvet cover set



**GUY sea green**  
duvet cover set



**MADS FURRY reef green**  
cushion



**FURRY reef green**  
cushion



**FURRY reef green**  
plaid





**ISABELLE balsam**  
cushion



**ISABELLE balsam**  
plaid/quilt



**ISABELLE balsam**  
pouf



**ISABELLE balsam**  
carpet



**FITTED SHEETS**  
oyster, denim, nightblue



**JULIA nightblue**  
cushion



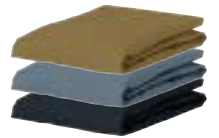
**JULIA nightblue**  
plaid/quilt



**TESSE reef green**  
pouf



**TESSE reef green**  
carpet



**FITTED SHEETS**  
olive, denim, nightblue



**FURRY vanilla**  
roll cushion



**FURRY vanilla**  
cushion



**FURRY vanilla**  
plaid



**FLOOR nightblue**  
carpet



**FITTED SHEETS**  
oyster, denim, nightblue



**FURRY vanilla**  
roll cushion



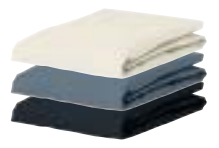
**FURRY vanilla**  
cushion



**FURRY vanilla**  
plaid



**FLOOR nightblue**  
carpet



**FITTED SHEETS**  
oyster, denim, nightblue

P. 65



**ZEVA oyster**  
duvet cover set



**ZEVA dusty green**  
duvet cover set



**MADS FURRY vanilla**  
cushion



**JULIA sand**  
cushion



**JULIA sand**  
plaid/quilt

P. 67



**ZEVA elephant grey**  
duvet cover set



**ZEVA nightblue**  
duvet cover set



**MADS FURRY reef green**  
cushion



**FURRY reef green**  
cushion



**FURRY reef green**  
plaid

P. 71



**ZEVA dusty green**  
duvet cover set



**ZEVA nightblue**  
duvet cover set



**MADS dark teal**  
cushion



**FURRY nightblue**  
cushion



**FURRY nightblue**  
plaid

P. 69



**ZEVA nightblue**  
duvet cover set



**ZEVA oyster**  
duvet cover set



**MADS dark teal**  
cushion



**FURRY nightblue**  
cushion



**FURRY nightblue**  
plaid



**FURRY vanilla**  
roll cushion



**FURRY vanilla**  
cushion



**FURRY vanilla**  
plaid



**FLOOR nightblue**  
carpet



**FITTED SHEETS**  
oyster, denim, dusty green



**ISABELLE balsam**  
cushion



**ISABELLE balsam**  
plaid/quilt



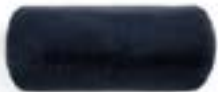
**ISABELLE balsam**  
pouf



**ISABELLE balsam**  
carpet



**FITTED SHEETS**  
grey, denim, nightblue



**FURRY nightblue**  
roll cushion



**JULIA nightblue**  
cushion



**JULIA nightblue**  
plaid/quilt



**FLOOR nightblue**  
carpet



**FITTED SHEETS**  
oyster, denim, dusty green



**FURRY nightblue**  
roll cushion



**JULIA nightblue**  
cushion



**JULIA nightblue**  
plaid/quilt



**FLOOR nightblue**  
carpet



**FITTED SHEETS**  
oyster, denim, nightblue







## Chapter 2

# Society of Harmony

*This theme is based on a balanced colour palette with space for creativity and imagination. The colours are sometimes bold without being too harsh, making it a very welcoming palette. We have used an elegant range of red, pink and purple shades, such as Plum Wine, Cherry red and Darling Pink. Green tones such as Moss and Forest Green provide stability. Olive works as the challenger within this theme.*







PREMIUM

CAMPAIGN

## Leila forest green

*100% organic cotton satin, GOTS certified, 300TC, with piping*

*100% biologisch katoen satijn, GOTS gecertificeerd, 300TC, met piping*

*100 % Bio-Baumwollsatin, GOTS-zertifiziert, 300TC, mit Paspel*

The Leila print is the modern-day sister of the Karli print, the type of iconic floral print you would expect from ESSENZA. The designers have created a composition of flowers from different paintings from the Dutch Masters archive. The print showcases countless, finely-painted flowers from all seasons, most of which were relatively rare during the time of the Dutch Masters. The use of three main colours gives this print a modern yet classic feel. Turn Leila over to reveal the solid background colour, balancing out the entire cover. The edges of this duvet cover and the pillowcases are lined with elegant piping for a finishing touch.

The fine threads, in combination with the satin weave and the high 300-thread count, gives the duvet cover extra sheen and a delightful feel. This results in a smooth and strong GOTS-certified organic cotton satin. The international GOTS certificate guarantees the use of organically grown cotton and ensures that cotton production occurs in an environmentally friendly and socially responsible manner. In other words, better for your skin, the planet, and the employees who make this fabric. This fabric creates a velvety soft duvet cover that will last many years and is guaranteed to provide a good night's rest.

Take a look at the mix and match (P. 134) for the complete combination with accessories.





**Jula Leila forest green**  
*kimono (ankle length)*  
81% viscose / 17% modal / 2% elastane

**Lexi Uni plum wine**  
*nightdress sleeveless*  
92% viscose / 8% elastane









PREMIUM

## Minte olive

*100% cotton satin, enzyme washed, 300TC, with double stitch finish*

*100% katoen satijn, enzymen wassing, 300TC, met double stitch afwerking*

*100% Baumwolle Satin, Enzym gewaschen, 300TC, mit Doppelnaht*

With duvet cover Minte you'll be sure to get a great night's sleep. This premium ESSENZA duvet cover brings peace and atmosphere to the bedroom. It isn't just the various gorgeous uni colours that are simply enchanting, the quality of the fabric is just as amazing. The front and reverse side of this duvet cover have the same uni colour. Once you slept under the Minte, you will never go back to something else. The fine yarn combined with the satin weave, the high 300 thread-count and the special enzyme washing give this duvet cover extra shine and makes it feel very supple. An incredibly velvety soft duvet cover that is durable and timeless. And did you see the special double stitching around the edges? Whichever colour you'll choose, sweet dreams are guaranteed. A fun tip: mix & match the different pillow cases that are separately available in all the colours.

**Take a look at the mix and match (P. 134) for the complete combination with accessories.**







**Hella Uni plum wine**

*sweater*

*59% cotton / 38% polyester / 3% elastane*

**Jill Uni plum wine**

*trousers long*

*59% cotton / 38% polyester / 3% elastane*







# Karli purple tulip

100% cotton satin

100% katoen satijn

100% Baumwolle Satin



The Karli print is a design with an iconic floral print as you would expect from ESSENZA. The designers have created a composition of flowers from different paintings from the Dutch Masters archive. The print showcases countless, finely-painted flowers from all seasons, most of which were relatively rare during the time of the Dutch Masters. This print features a rich and varied colour palette, making it a source of endless fascination. Turn the duvet over for a beautiful solid cover in the print's background colour. The Karli will automatically function as a unique accent in the bedroom by styling this side up.

Cotton satin is, without a doubt, our favourite fabric for bedding. Cotton satin is made from 100% natural cotton and therefore has the same characteristics as other cotton fabrics: breathability and moisture-wicking properties. A cotton satin duvet cover feels much softer and smoother than a 'normal' cotton cover due to the special satin weave that gives the fabric its sheen. The result is a fabric that looks and feels luxurious.

**Take a look at the mix and match (P. 134) for the complete combination with accessories.**













CAMPAIGN

## Karli darling pink

100% cotton satin

100% katoen satijn

100% Baumwolle Satin

The Karli print is a design with an iconic floral print as you would expect from ESSENZA. The designers have created a composition of flowers from different paintings from the Dutch Masters archive. The print showcases countless, finely-painted flowers from all seasons, most of which were relatively rare during the time of the Dutch Masters. This print features a rich and varied colour palette, making it a source of endless fascination. Turn the duvet over for a beautiful solid cover in the print's background colour. The Karli will automatically function as a unique accent in the bedroom by styling this side up.

Cotton satin is, without a doubt, our favourite fabric for bedding. Cotton satin is made from 100% natural cotton and therefore has the same characteristics as other cotton fabrics: breathability and moisture-wicking properties. A cotton satin duvet cover feels much softer and smoother than a 'normal' cotton cover due to the special satin weave that gives the fabric its sheen. The result is a fabric that looks and feels luxurious.

**Take a look at the mix and match (P. 136) for the complete combination with accessories.**





**Kae Karli magnolia pink**

*top long sleeve*

95% Lenzing™ EcoVero™ / 5% elastane

**Jules Karli magnolia pink**

*trousers long*

96% Lenzing™ EcoVero™ / 4% elastane











CAMPAIGN

## Tesse cherry red

*100% cotton satin with piping*

*100% katoen satijn met piping*

*100% Baumwolle Satin mit Paspel*

Tesse is a decorative ornamental print. Ornaments, or 'versierselen' as they were known in the 17th-century Netherlands, were commonly used at the time. Ornamental shapes were characterised by stylisation, symmetry or the repetition of a motif, all three of which are clearly visible in this Tesse print. The original of this print is an etching dating back to 1817 from the Rijksmuseum archives. On this duvet cover, the Tesse design is positioned as a panel print with side panels in a different colour. As a finishing touch, the edges of this duvet cover and pillowcases are trimmed with a piping. Turn the Tesse duvet over to discover a subtle two-tone wavy pattern.

Cotton satin is, without a doubt, our favourite fabric for bedding. Cotton satin is made from 100% natural cotton and therefore has the same characteristics as other cotton fabrics: breathability and moisture-wicking properties. A cotton satin duvet cover feels much softer and smoother than a 'normal' cotton cover due to the special satin weave that gives the fabric its sheen. The result is a fabric that looks and feels luxurious.

**Take a look at the mix and match (P. 136) for the complete combination with accessories.**





**Marie Tesse cherry red**

*woven top long sleeve*

*65% modal / 33% cotton / 2% elastane*

**Mare Tesse cherry red**

*trousers long*

*65% modal / 33% cotton / 2% elastane*



A woman with long dark hair is lying on a mustard yellow sofa, looking towards the right. She is wearing a short-sleeved kimono with a vibrant floral pattern in shades of pink, red, and blue, and matching wide-leg trousers with a geometric pattern in pink and white. Her right arm is raised behind her head, and her left hand rests on her lap. The background is a large, detailed mural depicting a classical scene with figures in a landscape, featuring an arched structure and a body of water.

**Sarai Karli magnolia pink**

*kimono*

100% cotton satin

**Caro Tesse cherry red**

*nightdress short sleeve*

65% modal / 33% cotton / 2% elastane

**Mare Tesse cherry red**

*trousers long*

65% modal / 33% cotton / 2% elastane









1. Furry rose plaid - 2. Karli darling pink cushion - 3. Karli darling pink pouf





1.

2.

1. Teddy plum wine plaid - 2. Isabelle marsala carpet

1. Furry rose cushion - 2. Furry leather brown cushion - 3. Mads Furry rose cushion  
4. Mads furry bright terra cushion - 5. Mads furry bright terra cushion











## Ophelia plum wine

100% cotton satin

100% katoen satijn

100% Baumwolle Satin

Oh, Ophelia! Who cannot but say 'yes' to this showpiece? This gorgeous Ophelia print has become another icon of the ESSENZA collection. This print is inspired by the Arts and Crafts movement, an English art and industrial design movement from the second half of the 19th century. Ophelia exudes a sophisticated, rich ambience. The print is designed in exquisite detail and has a unique colour gradient, making this print elegant and very refined. The other side of the duvet cover features a subtle, geometric dotted pattern for double-sided use.

Cotton satin is, without a doubt, our favourite fabric for bedding. Cotton satin is made from 100% natural cotton and therefore has the same characteristics as other cotton fabrics: breathability and moisture-wicking properties. A cotton satin duvet cover feels much softer and smoother than a 'normal' cotton cover due to the special satin weave that gives the fabric its sheen. The result is a fabric that looks and feels luxurious.

**Take a look at the mix and match (P. 136) for the complete combination with accessories.**







## Teada moss

*100% cotton satin jacquard*

*100% katoen satijn jacquard*

*100% Baumwolle Satin Jacquard*

This jacquard was originally a hand-painted print, the Teade, showing a contemporary take on a traditional chequered pattern. The chequers provide depth and detail, and the brushed effect makes the lines slightly less even than you would expect from a traditional chequer print. This print is executed with a jacquard weave instead of a full-colour print, giving it a softer and more tranquil look for a perfect balance. With the Teada, your eye is drawn to a different element every time, thanks to the jacquard weave which gives this fabric a mesmerising effect. Turn the duvet cover over to reveal a tranquil solid cover in the same colour.

Cotton satin is, without a doubt, our favourite fabric for bedding. Cotton satin is made from 100% natural cotton and therefore has the same characteristics as other cotton fabrics: breathability and moisture-wicking properties. A cotton satin duvet cover feels much softer and smoother than a 'normal' cotton cover due to the special satin weave that gives the fabric its sheen. The result is a fabric that looks and feels luxurious.

**Take a look at the mix and match (P. 136) for the complete combination with accessories.**





## Teada grey

*100% cotton satin jacquard*

*100% katoen satijn jacquard*

*100% Baumwolle Satin Jacquard*

This jacquard was originally a hand-painted print, the Teade, showing a contemporary take on a traditional chequered pattern. The chequers provide depth and detail, and the brushed effect makes the lines slightly less even than you would expect from a traditional chequer print. This print is executed with a jacquard weave instead of a full-colour print, giving it a softer and more tranquil look for a perfect balance. With the Teada, your eye is drawn to a different element every time, thanks to the jacquard weave which gives this fabric a mesmerising effect. Turn the duvet cover over to reveal a tranquil solid cover in the same colour.

Cotton satin is, without a doubt, our favourite fabric for bedding. Cotton satin is made from 100% natural cotton and therefore has the same characteristics as other cotton fabrics: breathability and moisture-wicking properties. A cotton satin duvet cover feels much softer and smoother than a 'normal' cotton cover due to the special satin weave that gives the fabric its sheen. The result is a fabric that looks and feels luxurious.

**Take a look at the mix and match (P. 138) for the complete combination with accessories.**









1.

2.

3.

1. Furry moss plaid - 2. Mads Furry moss cushion - 3. Isabelle moss carpet



# Sol antique pink

100% cotton satin

100% katoen satijn

100% Baumwolle Satin



Sol is a geometric print with flowing lines in a unique colour composition. This print's initial starting point was our iconic print, Fleur. All the colours in this rich and complex flower print have been drawn out into lines. The Sol owes the variations in line thickness to the various colour volumes in the Fleur print. By applying curves to these lines, the Sol print was born. Turn the duvet over for a beautiful solid cover in the print's background colour.

Cotton satin is, without a doubt, our favourite fabric for bedding. Cotton satin is made from 100% natural cotton and therefore has the same characteristics as other cotton fabrics: breathability and moisture-wicking properties. A cotton satin duvet cover feels much softer and smoother than a 'normal' cotton cover due to the special satin weave that gives the fabric its sheen. The result is a fabric that looks and feels luxurious.

**Take a look at the mix and match (P. 138) for the complete combination with accessories.**







**Luna Uni plum wine**  
*top sleeveless*  
92% viscose / 8% elastane

**Natalie Uni plum wine**  
*shorts*  
92% viscose / 8% elastane





Isabelle marsala plaid



# Bernice beachwood white

*100% cotton twill*

*100% katoen twill*

*100% Baumwolle Twill*

The Bernice print is a romantic rose print with an innovative colour scheme. The roses used in the pattern are inspired by a 1688 drawing by Johan Teyler (Rijksmuseum), which ESSENZA has given a contemporary look through the creative use of colour. Turn Bernice over to reveal the Camille print in two-tone hand-painted roses to balance out the cover.

Bernice is made from cotton twill with a peach finish, a delightfully supple, inelastic fabric with a twill weave that exposes the subtle diagonals in the fabric. This weave also makes the material exceptionally strong. In other words, an ideal combination for long-lasting bedding products. The peach finish, obtained by lightly brushing the fabric for a soft, fuzzy feel, makes this material perfect for colder days.

**Take a look at the mix and match (P. 138) for the complete combination with accessories.**









# Camille plum wine

*100% cotton twill*

*100% katoen twill*

*100% Baumwolle Twill*

The Camille print is reminiscent of the colourful world of rose gardens in bloom with a hand-drawn rose print characterised by a vintage vibe. The large roses alternate with smaller roses, presented in great detail. Floral prints, a recurring theme in ESSENZA's collection, refer to the natural world as a source of inspiration. Turn the duvet over to see the Camille print in a different, reversed colourway for a playful mix-and-match look.

Camille is made from cotton twill with a peach finish, a delightfully supple, inelastic fabric with a twill weave that exposes the subtle diagonals in the fabric. This weave also makes the material exceptionally strong. In other words, an ideal combination for long-lasting bedding products. The peach finish, obtained by lightly brushing the fabric for a soft, fuzzy feel, makes this material perfect for colder days.

**Take a look at the mix and match (P. 138) for the complete combination with accessories.**





## Gwendolyn darkest green\*

50% cotton satin / 50% lyocell, 300TC with piping

50% katoen satijn / 50% lyocell, 300TC met piping

50% Baumwolle Satin / 50% Lyocell, 300TC mit Paspel

Gwendolyn provides the backdrop for Willem van Aelst's Flower Still Life with a Timepiece from 1663. A true showpiece! Van Aelst's flower still lifes differ from those of his predecessors. Instead of painting symmetrical bouquets, he arranged them along a diagonal. The resulting bouquet's dynamic intensity makes it highly suitable for a large canvas such as a duvet cover. The contrast between light and dark makes this work extra unique – a timeless centrepiece. As a finishing touch, the edges of this duvet cover and pillowcases are trimmed with piping.

The combination of cotton and lyocell results in a silky smooth duvet cover. This fabric is a relatively new sustainable material that feels cool in the summer and warm in the winter. Lyocell is a sustainable material made from fast-growing eucalyptus or birch trees that grow well in even the most depleted soils without irrigation and with few pesticides or herbicides. No toxic chemicals and less water are used during the production process. It's also an excellent material to promote a good night's sleep.

\*Available in the following sizes:

140x200 cm, 140x220 cm, 200x220 cm, 240x220 cm, 260x220 cm

**Take a look at the mix and match (P. 140) for the complete combination with accessories.**











## Clemence cumin yellow\*

*50% cotton satin / 50% lyocell, 300TC, with piping*

*50% katoen satijn / 50% lyocell, 300TC, met piping*

*50% Baumwolle Satin / 50% Lyocell, 300TC, mit Paspel*

This flower still life by Jan van Huysum (1682 - 1749) measures only 21 x 27 cm in real life. It is a unique piece by Jan van Huysum, who painted primarily large, extravagant bouquets. Clemence presents this painting in larger-than-life form, highlighting the gorgeous details from this masterpiece in their full glory. The golden sheen and the beautifully painted delicate roses are a feast for the eye. As a finishing touch, the edges of this duvet cover and pillowcases are trimmed with piping.

The combination of cotton and lyocell results in a silky smooth duvet cover. This fabric is a relatively new sustainable material that feels cool in the summer and warm in the winter. Lyocell is a sustainable material made from fast-growing eucalyptus or birch trees that grow well in even the most depleted soils without irrigation and with few pesticides or herbicides. No toxic chemicals and less water are used during the production process. It's also an excellent material to promote a good night's sleep.

\*Available in the following sizes: 140x200 cm, 140x220 cm, 200x220 cm, 240x220 cm, 260x220 cm

**Take a look at the mix and match (P. 140) for the complete combination with accessories.**





ESSENZA for **Mh** Mauritshuis

## Amadee black

*100% cotton satin*

*100% katoen satijn*

*100% Baumwolle Satin*

This design features a variety of elements from four paintings in the Mauritshuis collection. Various eye-catching features from the works *Fruit Still Life* by Balthasar van der Ast, 1620, *Narcissi, Periwinkle and Violets in an Ewer* by Ludger Tom Ring the Younger, 1562, *Flowers in a Wan-Li Vase* by Jan Breughel the Elder, 1610-1615, and *Flowers in a Glass Flask* by Jacob de Gheyn II, 1612 are brought together in a new composition. Amadee displays vases with opulent flower bouquets with individual fruit and flower elements. These components' spacious yet playful placement results in a contemporary design that maintains a focus on the individual elements. Turn the duvet over to reveal a tranquil solid cover in the same colour.

Cotton satin is, without a doubt, our favourite fabric for bedding. Cotton satin is made from 100% natural cotton and therefore has the same characteristics as other cotton fabrics: breathability and moisture-wicking properties. A cotton satin duvet cover feels much softer and smoother than a 'normal' cotton cover due to the special satin weave that gives the fabric its sheen. The result is a fabric that looks and feels luxurious.

**Take a look at the mix and match (P. 140) for the complete combination with accessories.**









## Amadee sand

*100% cotton satin*

*100% katoen satijn*

*100% Baumwolle Satin*

This design features a variety of elements from four paintings in the Mauritshuis collection. Various eye-catching features from the works *Fruit Still Life* by Balthasar van der Ast, 1620, *Narcissi, Periwinkle and Violets in an Ewer* by Ludger Tom Ring the Younger, 1562, *Flowers in a Wan-Li Vase* by Jan Breughel the Elder, 1610-1615, and *Flowers in a Glass Flask* by Jacob de Gheyn II, 1612 are brought together in a new composition. Amadee displays vases with opulent flower bouquets with individual fruit and flower elements. These components' spacious yet playful placement results in a contemporary design that maintains a focus on the individual elements. Turn the duvet over to reveal a tranquil solid cover in the same colour.

Cotton satin is, without a doubt, our favourite fabric for bedding. Cotton satin is made from 100% natural cotton and therefore has the same characteristics as other cotton fabrics: breathability and moisture-wicking properties. A cotton satin duvet cover feels much softer and smoother than a 'normal' cotton cover due to the special satin weave that gives the fabric its sheen. The result is a fabric that looks and feels luxurious.

**Take a look at the mix and match (P. 140) for the complete combination with accessories.**





## Daffodils Reunited beachwood white

*100% cotton satin*

*100% katoen satijn*

*100% Baumwolle Satin*

Daffodils Reunited brings the flowers, which are based on the Ludger Tom Ring the Younger painting, to life on a craquelé background. Refined, elegant and classical in form. Now that's what we call a masterpiece.

Cotton satin is, without a doubt, our favourite fabric for bedding. Cotton satin is made from 100% natural cotton and therefore has the same characteristics as other cotton fabrics: breathability and moisture-wicking properties. A cotton satin duvet cover feels much softer and smoother than a 'normal' cotton cover due to the special satin weave that gives the fabric its sheen. The result is a fabric that looks and feels luxurious.

Take a look at the mix and match (P. 142) for the complete combination with accessories.







A woman with long, wavy brown hair and red lipstick stands in a room with large, paneled wooden doors. She is wearing a black kimono with a large floral pattern in white, yellow, and red. The kimono is ankle-length and has a wide collar. She is also wearing tan-colored open-toe high-heeled sandals. To her right, a small, round, ribbed wooden pedestal holds a round, clear glass vase with a yellow liquid inside. The floor is covered with a patterned rug, and a small portion of a patterned cushion is visible on the left. The lighting is warm and dramatic, coming from a window behind the doors.

Jula Daffodils Reunited black  
*kimono (ankle length)*





# Mix & Match

Society of Harmony

P. 84



**LEILA forest green**  
duvet cover set



**MINTE olive**  
duvet cover set



**ROEBY moss**  
cushion



**ROEBY moss**  
plaid/quilt



**JULIA forest green**  
cushion

P. 88



**MINTE olive**  
duvet cover set



**LEILA forest green**  
duvet cover set



**MADS FURRY moss**  
cushion



**FURRY moss**  
roll cushion



**ROEBY moss**  
cushion

P. 92



**KARLI purple tulip**  
duvet cover set



**TESSE cherry red**  
duvet cover set



**GIGI cherry pink**  
cushion



**ISABELLE marsala**  
cushion



**JULIA forest green**  
cushion



**FURRY moss**  
roll cushion



**FURRY moss**  
cushion



**FURRY moss**  
plaid



**FLOOR nightblue**  
carpet



**FITTED SHEETS**  
purple breeze, olive, moss



**ROEBY moss**  
plaid/quilt



**JULIA forest green**  
cushion



**JULIA forest green**  
plaid/quilt



**ISABELLE clay**  
carpet



**FITTED SHEETS**  
purple breeze, olive, moss



**TEDDY plum wine**  
plaid



**RUTH wine red**  
plaid/quilt



**ISABELLE marsala**  
pouf



**FLOOR nightblue**  
carpet



**FITTED SHEETS**  
purple breeze, burgundy, moss



P. 95



**KARLI darling pink**  
duvet cover set



**KARLI purple tulip**  
duvet cover set



**GIGI cherry pink**  
cushion



**FURRY rose**  
cushion



**RUTH wine red**  
plaid/quilt

P. 99



**TESSE cherry red**  
duvet cover set



**TEADA moss**  
duvet cover set



**GIGI cherry pink**  
cushion



**FURRY moss**  
cushion



**TEDDY plum wine**  
plaid

P. 107



**OPHELIA plum wine**  
duvet cover set



**TESSE cherry red**  
duvet cover set



**MADS FURRY rose**  
cushion



**FURRY rose**  
cushion



**FURRY rose**  
plaid

P. 109



**TEADA moss**  
duvet cover set



**LEILA forest green**  
duvet cover set



**MADS FURRY moss**  
cushion



**FURRY moss**  
cushion



**FURRY moss**  
roll cushion



**ISABELLE marsala**  
cushion



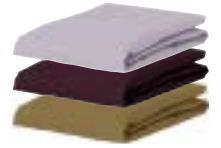
**KARLI darling pink**  
cushion



**KARLI darling pink**  
pouf



**ISABELLE marsala**  
carpet



**FITTED SHEETS**  
purple breeze, burgundy, olive



**ISABELLE marsala**  
plaid/quilt



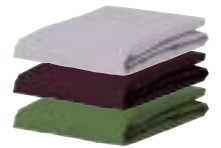
**ROEBY moss**  
cushion



**ROEBY moss**  
plaid/quilt



**ISABELLE clay**  
carpet



**FITTED SHEETS**  
purple breeze, burgundy, moss



**GIGI cherry pink**  
cushion



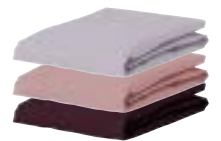
**TEDDY plum wine**  
plaid



**ISABELLE marsala**  
pouf



**ISABELLE marsala**  
carpet



**FITTED SHEETS**  
purple breeze, woodrose, burgundy



**JULIA forest green**  
cushion



**JULIA forest green**  
plaid/quilt



**FURRY moss**  
plaid



**ISABELLE clay**  
carpet



**FITTED SHEETS**  
purple breeze, olive, moss



P. 111



**TEADA grey**  
duvet cover set



**TESSE cherry red**  
duvet cover set



**GIGI cherry pink**  
cushion



**FURRY rose**  
cushion



**RUTH wine red**  
plaid/quilt

P. 114



**SOL antique pink**  
duvet cover set



**TEADA moss**  
duvet cover set



**MADs FURRY rose**  
cushion



**FURRY rose**  
cushion



**FURRY rose**  
plaid

P. 118



**BERNICE beachwood white**  
duvet cover set



**CAMILLE plum wine**  
duvet cover set



**GIGI pale beach**  
cushion



**MADs FURRY vanilla**  
cushion



**FURRY vanilla**  
roll cushion

P. 121



**CAMILLE plum wine**  
duvet cover set



**BERNICE beachwood white**  
duvet cover set



**GIGI pale beach**  
cushion



**MADs FURRY vanilla**  
cushion



**FURRY vanilla**  
roll cushion



**ISABELLE marsala**  
cushion



**ISABELLE marsala**  
plaid/quilt



**ISABELLE marsala**  
pouf



**ISABELLE marsala**  
carpet



**FITTED SHEETS**  
purple breeze, burgundy, moss



**JULIA forest green**  
cushion



**JULIA forest green**  
plaid/quilt



**FURRY moss**  
plaid



**ISABELLE forest green**  
carpet



**FITTED SHEETS**  
purple breeze, burgundy, moss



**FURRY vanilla**  
cushion



**FURRY vanilla**  
plaid



**RUTH wine red**  
plaid/quilt



**ISABELLE marsala**  
carpet



**FITTED SHEETS**  
purple breeze, woodrose, burgundy



**FURRY vanilla**  
cushion



**FURRY vanilla**  
plaid



**TEDDY plum wine**  
plaid



**ISABELLE marsala**  
carpet



**FITTED SHEETS**  
purple breeze, woodrose, burgundy



P. 122



**GWENDOLYN darkest green**  
duvet cover set



**AMADEE black**  
duvet cover set



**GIGI FURRY denim**  
cushion



**FURRY denim**  
cushion



**FURRY denim**  
plaid

P. 125



**CLEMENCE cumin yellow**  
duvet cover set



**DAFFODILS REUNITED  
beachwood white**  
duvet cover set



**GIGI pale beach**  
cushion



**JULIA sand**  
cushion



**JULIA sand**  
plaid/quilt

P. 126



**AMADEE black**  
duvet cover set



**AMADEE sand**  
duvet cover set



**MADs FURRY moss**  
cushion



**FURRY moss**  
roll cushion



**JULIA forest green**  
cushion

P. 129



**AMADEE sand**  
duvet cover set



**AMADEE black**  
duvet cover set



**MADs FURRY moss**  
cushion



**FURRY moss**  
roll cushion



**JULIA forest green**  
cushion



**MADS dark teal**  
cushion



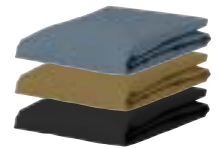
**JULIA café noir**  
cushion



**JULIA café noir**  
plaid/quilt



**FLORAL GIRL black**  
carpet



**FITTED SHEETS**  
denim, olive, anthracite



**JULIA café noir**  
cushion



**JULIA café noir**  
plaid/quilt



**DAFFODILS REUNITED**  
**beachwood white**  
cushion



**DAFFODILS REUNITED**  
**black**  
carpet



**FITTED SHEETS**  
oyster, olive, anthracite



**JULIA forest green**  
plaid/quilt



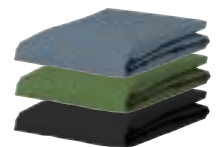
**FURRY moss**  
plaid



**DAFFODILS REUNITED**  
**black**  
cushion



**FLORAL GIRL black**  
carpet



**FITTED SHEETS**  
denim, moss, anthracite



**JULIA forest green**  
plaid/quilt



**FURRY moss**  
plaid



**DAFFODILS REUNITED**  
**black**  
cushion



**DAFFODILS REUNITED**  
**black**  
carpet



**FITTED SHEETS**  
oyster, olive, anthracite





**DAFFODILS REUNITED  
beachwood white**  
duvet cover set



**DAFFODILS REUNITED  
black**  
duvet cover set



**GIGI pale beach**  
cushion



**JULIA sand**  
cushion



**JULIA sand**  
plaid/quilt





**JULIA café noir**  
cushion



**DAFFODILS REUNITED  
beachwood white**  
cushion



**DAFFODILS REUNITED  
black**  
cushion



**DAFFODILS REUNITED  
black**  
carpet



**FITTED SHEETS**  
oyster, café noir, anthracite





# New Bags & Towels



New



**Ophelia darling pink**  
from €9,95 see page 227  
for more information

New



**Sol darling pink**  
from €9,95 see page 227  
for more information

New



**Megan Ophelia darling pink**  
B 20 cm x D 8 cm x H 11 cm  
make-up bag €39,95

New



**Tracy Ophelia darling pink**  
B 25 cm x D 17 cm x H 17 cm  
beautycase €59,95



New



**Karli reef green**  
from €9,95 see page 226  
for more information

New



**Sol reef green**  
from €9,95 see page 226  
for more information

New



**Megan Karli reef green**  
B 20 cm x D 8 cm x H 11 cm  
make-up bag €39,95

New



**Tracy Karli reef green**  
B 25 cm x D 17 cm x H 17 cm  
beautycase €59,95





# Overview

Here you'll find one clear overview with both our new and continuing collections including information about fabrics, sizing and unique details. All prices mentioned in this book are Suggested Retail Prices.







# Deep Balance

New



## FELIPA oyster

100% bamboo viscose, 300TC  
front jacquard woven, reverse satin woven

100% bamboe viscose, 300TC  
voorzijde jacquard geweven,  
achterzijde satijn geweven

100% Bambus-Viskose, 300 TC  
Vorderseite Jacquardgewebe,  
Rückseite Satingewebe

New



## BELEN nightblue

100% bamboo viscose, 300TC  
front jacquard woven, reverse satin woven

100% bamboe viscose, 300TC  
voorzijde jacquard geweven,  
achterzijde satijn geweven

100% Bambus-Viskose, 300 TC  
Vorderseite Jacquardgewebe,  
Rückseite Satingewebe

New



## FLOOR nightblue

100% cotton satin  
100% katoen satijn  
100% Baumwolle Satin

New



## KARLI reef green

100% cotton satin  
100% katoen satijn  
100% Baumwolle Satin

New



## ODILIA deep sea blue

100% cotton satin  
100% katoen satijn  
100% Baumwolle Satin

New



## SOL comforting green

100% cotton satin  
100% katoen satijn  
100% Baumwolle Satin

New



## ISSADORE darkest blue

100% cotton satin  
100% katoen satijn  
100% Baumwolle Satin

New



## BERNICE darkest blue

100% cotton twill  
100% katoen twill  
100% Baumwolle Twill



New



#### LEILA chambray blue

100% organic cotton satin, GOTS certified, 300TC, with piping  
100% biologisch katoen satijn, GOTS gecertificeerd, 300TC, met piping  
100 % Bio-Baumwollsatin, GOTS-zertifiziert, 300TC, mit Paspel



New



#### MAEN nightblue

100% cotton broderie anglaise  
100% katoen broderie anglaise  
100% Baumwolle mit Stickerei Anglaise

New



#### TESSE reef green

100% cotton satin with piping  
100% katoen satijn met piping  
100% Baumwolle Satin mit Paspel

New



#### YULE chambray blue

100% cotton satin  
100% katoen satijn  
100% Baumwolle Satin

New



#### OTIS anthracite

100% organic cotton jersey, GOTS certified with piping  
100% biologisch katoen jersey, GOTS gecertificeerd met piping  
100% Bio-Baumwolljersey, GOTS-zertifiziert mit Paspel



New



#### OTIS stone

100% organic cotton jersey, GOTS certified with piping  
100% biologisch katoen jersey, GOTS gecertificeerd met piping  
100% Bio-Baumwolljersey, GOTS-zertifiziert mit Paspel



New



#### CAMILLE reef green

100% cotton twill  
100% katoen twill  
100% Baumwolle Twill



New



### ZEVA nightblue

100% cotton flannel with *double stitch* finishing  
100% katoen flannel, met *double stitch* afwerking  
100% Baumwolle Flanell, mit Doppelnaht

New



### ZEVA dusty green

100% cotton flannel with *double stitch* finishing  
100% katoen flannel, met *double stitch* afwerking  
100% Baumwolle Flanell, mit Doppelnaht

New



### ZEVA oyster

100% cotton flannel with *double stitch* finishing  
100% katoen flannel, met *double stitch* afwerking  
100% Baumwolle Flanell, mit Doppelnaht

New



### Zeva elephant grey

100% cotton flannel with *double stitch* finishing  
100% katoen flannel, met *double stitch* afwerking  
100% Baumwolle Flanell, mit Doppelnaht



### APRIL white

100% cotton percale, 200TC  
100% katoen perkal, 200TC  
100% Baumwolle Perkal, 200TC



### BELEN fern yellow

100% bamboo viscose, 300TC  
front jacquard woven, reverse satin woven  
100% bamboe viscose, 300TC  
voorzijde jacquard geweven,  
achterzijde satijn geweven  
100% Bambus-Viskose, 300 TC  
Vorderseite Jacquardgewebe,  
Rückseite Satingewebe



### MAY white

100% cotton percale, 200TC  
100% katoen perkal, 200TC  
100% Baumwolle Perkal, 200TC



### MAERE comforting green

100% organic cotton satin,  
GOTS certified, 300TC, with piping  
100% biologisch katoen satijn,  
GOTS gecertificeerd, 300TC, met piping  
100% Bio-Baumwollsatin, GOTS zertifiziert,  
300TC, mit Paspel



### ISABELLE balsam

50% cotton satin / 50% lyocell, 300TC  
50% katoen satijn / 50% lyocell, 300TC  
50% Baumwolle Satin / 50% Lyocell, 300TC



### ISABELLE forest green

50% cotton satin / 50% lyocell, 300TC  
50% katoen satijn / 50% lyocell, 300TC  
50% Baumwolle Satin / 50% Lyocell, 300TC



#### ISABELLE mauve

50% cotton satin / 50% lyocell, 300TC  
 50% katoen satijn / 50% lyocell, 300TC  
 50% Baumwolle Satin / 50% Lyocell, 300TC



#### ISABELLE marsala

50% cotton satin / 50% lyocell, 300TC  
 50% katoen satijn / 50% lyocell, 300TC  
 50% Baumwolle Satin / 50% Lyocell, 300TC



#### OPHELIA nightblue

100% cotton satin  
 100% katoen satijn  
 100% Baumwolle Satin



#### FEDA nightblue

100% cotton satin  
 100% katoen satijn  
 100% Baumwolle Satin





# *Society of Harmony*



New



### LEILA forest green

100% organic cotton satin, GOTS certified,  
300TC, with piping  
100% biologisch katoen satijn, GOTS gecertificeerd,  
300TC, met piping  
100 % Bio-Baumwollsatin, GOTS-zertifiziert,  
300TC, mit Paspel



### MINTE olive

100% cotton satin, enzyme washed,  
300TC, with *double stitch* finish  
100% katoen satijn, enzymen wassing,  
300TC, met *double stitch* afwerking  
100% Baumwolle Satin, Enzym gewaschen,  
300TC, mit Doppelnaht

New



### KARLI purple tulip

100% cotton satin  
100% katoen satijn  
100% Baumwolle Satin

New



### KARLI darling pink

100% cotton satin  
100% katoen satijn  
100% Baumwolle Satin

New



### TESSE cherry red

100% cotton satin with piping  
100% katoen satijn met piping  
100% Baumwolle Satin mit Paspel

New



### OPHELIA plum wine

100% cotton satin  
100% katoen satijn  
100% Baumwolle Satin

New



### TEADA moss

100% cotton satin jacquard  
100% katoen satijn jacquard  
100% Baumwolle Satin Jacquard

New



### TEADA grey

100% cotton satin jacquard  
100% katoen satijn jacquard  
100% Baumwolle Satin Jacquard



### SOL antique pink

100% cotton satin  
100% katoen satijn  
100% Baumwolle Satin



New



**BERNICE beachwood white**

100% cotton twill  
100% katoen twill  
100% Baumwolle Twill

New



**CAMILLE plum wine**

100% cotton twill  
100% katoen twill  
100% Baumwolle Twill





### BELEN vanilla

100% bamboo viscose, 300TC  
front jacquard woven, reverse satin woven

100% bamboe viscose, 300TC  
voorzijde jacquard geweven,  
achterzijde satijn geweven

100% Bambus-Viskose, 300 TC  
Vorderseite Jacquardgewebe,  
Rückseite Satingewebe



### OPHELIA midnight swim

100% cotton satin  
100% katoen satijn  
100% Baumwolle Satin



### MAERE faded white

100% organic cotton satin,  
GOTS certified, 300TC, with piping

100% biologisch katoen satijn,  
GOTS gecertificeerd, 300TC, met piping

100% Bio-Baumwollsatin, GOTS zertifiziert,  
300TC, mit Paspel



### LISA silk

100% cotton satin  
100% katoen satijn  
100% Baumwolle Satin



### ISABELLE darkest brown

50% cotton satin / 50% lyocell, 300TC  
50% katoen satijn / 50% lyocell, 300TC  
50% Baumwolle Satin / 50% Lyocell, 300TC



### ISABELLE clay

50% cotton satin / 50% lyocell, 300TC  
50% katoen satijn / 50% lyocell, 300TC  
50% Baumwolle Satin / 50% Lyocell, 300TC



### FEDA bright terra

100% cotton satin  
100% katoen satijn  
100% Baumwolle Satin





**MAEN white**  
 100% cotton broderie anglaise  
 100% katoen broderie anglaise  
 100% Baumwolle mit Stickerei Anglaise



**PHAEDRA sahara sun**  
 100% cotton satin  
 100% katoen satijn  
 100% Baumwolle Satin



**FEDA pure white**  
 100% cotton satin  
 100% katoen satijn  
 100% Baumwolle Satin



**PHAEDRA hazy blue**  
 100% cotton satin  
 100% katoen satijn  
 100% Baumwolle Satin



**COLETTE pure white**  
 50% cotton satin / 50% lyocell, 300TC  
 50% katoen satijn / 50% lyocell, 300TC  
 50% Baumwolle Satin / 50% Lyocell, 300TC



**LISA thyme**  
 100% cotton satin  
 100% katoen satijn  
 100% Baumwolle Satin



**FLOOR ilusion blue**  
 100% cotton satin  
 100% katoen satijn  
 100% Baumwolle Satin



**OPHELIA sahara sun**  
 100% cotton satin  
 100% katoen satijn  
 100% Baumwolle Satin



**CELESTE pure white**  
 100% cotton satin  
 100% katoen satijn  
 100% Baumwolle Satin



**OPHELIA hazy blue**  
 100% cotton satin  
 100% katoen satijn  
 100% Baumwolle Satin



**LENTHE sahara sun**  
100% cotton satin  
100% katoen satijn  
100% Baumwolle Satin



**LENTHE cool gray**  
100% cotton satin  
100% katoen satijn  
100% Baumwolle Satin



**VICIA yellow straw**  
100% organic cotton satin, GOTS certified, 300TC, with piping  
100% biologisch katoen satijn, GOTS gecertificeerd, 300TC, met piping  
100% Bio-Baumwoll satin, GOTS zertifiziert, 300TC, mit Paspel



**VICIA pink sand**  
100% organic cotton satin, GOTS certified, 300TC, with piping  
100% biologisch katoen satijn, GOTS gecertificeerd, 300TC, met piping  
100% Bio-Baumwoll satin, GOTS zertifiziert, 300TC, mit Paspel



**MAERE hazy blue**  
100% organic cotton satin, GOTS certified, 300TC, with piping  
100% biologisch katoen satijn, GOTS gecertificeerd, 300TC, met piping  
100% Bio-Baumwoll satin, GOTS zertifiziert, 300TC, mit Paspel



**MAERE pink sand**  
100% organic cotton satin, GOTS certified, 300TC, with piping  
100% biologisch katoen satijn, GOTS gecertificeerd, 300TC, met piping  
100% Bio-Baumwoll satin, GOTS zertifiziert, 300TC, mit Paspel





# ESSENZA for Mh Mauritshuis

New



## CWENDOLYN darkest green

50% cotton satin / 50% lyocell,  
300TC with piping

50% katoen satijn / 50% lyocell,  
300TC met piping

50% Baumwolle Satin / 50% Lyocell,  
300TC mit Paspel

New



## CLEMENCE cumin yellow

50% cotton satin / 50% lyocell,  
300TC with piping

50% katoen satijn / 50% lyocell,  
300TC met piping

50% Baumwolle Satin / 50% Lyocell,  
300TC mit Paspel

New



## AMADEE black

100% cotton satin

100% katoen satijn

100% Baumwolle Satin

New



## AMADEE sand

100% cotton satin

100% katoen satijn

100% Baumwolle Satin



## BEAUTIFUL BOUQUET brown

100% cotton satin

100% katoen satijn

100% Baumwolle Satin



## GALLERY OF ROSES nightblue

100% cotton satin

100% katoen satijn

100% Baumwolle Satin



## FLOWER STATEMENT stone

100% cotton satin

100% katoen satijn

100% Baumwollsatin



## ELEGANT VIEW sky

100% cotton satin

100% katoen satijn

100% Baumwolle Satin



#### **ELEGANT VIEW sky**

100% polyester velvet with piping  
100% polyester velvet met piping  
100% polyestersamt mit paspel



#### **DAFFODILS REUNITED black**

100% polyester velvet with piping  
100% polyester velvet met piping  
100% polyestersamt mit paspel



#### **ELEGANT VIEW sky**

60% polyester / 30% thermoplastisch  
polyurethaan / 10% katoen

60% polyester / 30% thermoplastisch  
polyurethaan / 10% katoen

60% Polyester / 30% Thermoplastik PU  
10% Baumwolle



#### **FLOWER STATEMENT stone**

60% polyester / 30% thermoplastisch  
polyurethaan / 10% katoen

60% polyester / 30% thermoplastisch  
polyurethaan / 10% katoen

60% Polyester / 30% Thermoplastik PU  
10% Baumwolle



#### **GALLERY OF ROSES nightblue**

100% polyester velvet with piping  
100% polyester velvet met piping  
100% polyestersamt mit paspel



#### **JULA GALLERY OF ROSES nightblue**

100% cotton satin  
100% katoen satijn  
100% Baumwollsatin



#### **BEAUTIFUL BOUQUET brown**

60% polyester / 30% thermoplastisch  
polyurethaan / 10% katoen

60% polyester / 30% thermoplastisch  
polyurethaan / 10% katoen

60% Polyester / 30% Thermoplastik PU  
10% Baumwolle



#### **FLOWER STATEMENT stone**

100% polyester velvet  
100% polyestersamt

New



#### **DAFFODILS REUNITED beachwood white**

100% cotton satin  
100% katoen satijn  
100% Baumwolle Satin

New



#### **DAFFODILS REUNITED beachwood white**

cushion  
100% polyester velvet with piping  
100% polyester velvet met piping  
100% polyestersamt mit paspel





1.

2.

1. Flower Statement stone duvet cover - 2. Flower Statement stone carpet



#### FLORAL GIRL black

60% polyester / 30% thermoplastisch  
polyurethaan / 10% katoen

60% polyester / 30% thermoplastisch  
polyurethaan / 10% katoen

60% Polyester / 30% Thermoplastik PU  
10% Baumwolle



#### DAFFODILS REUNITED black

60% polyester / 30% thermoplastisch  
polyurethaan / 10% katoen

60% polyester / 30% thermoplastisch  
polyurethaan / 10% katoen

60% Polyester / 30% Thermoplastik PU  
10% Baumwolle



#### FLORAL GIRL black

100% polyester velvet with piping

100% polyester velvet met piping

100% polyestersamt mit paspel



#### DAFFODILS REUNITED black

100% polyester velvet with piping

100% polyester velvet met piping

100% polyestersamt mit paspel



#### FLORAL GIRL black

100% cotton satin

100% katoen satijn

100% Baumwollsatin



#### DAFFODILS REUNITED black

100% cotton satin

100% katoen satijn

100% Baumwollsatin



ESSENZA for Mh Mauritshuis



# Minte

100% cotton satin, enzymed washed  
300TC, double stitch seam

100% katoen satijn, enzymen wassing,  
300TC, met double stitch afwerking

100% Baumwolle Satin, Enzym gewaschen,  
300TC, mit Doppelnaht





white



bright terra



oyster



woodrose



yellow straw



dusty rose



cement



burgundy



purple breeze



# Minte

100% cotton satin, enzymed washed  
300TC, double stitch seam

100% katoen satijn, enzymen wassing,  
300TC, met double stitch afwerking

100% Baumwolle Satin, Enzym gewaschen,  
300TC, mit Doppelnaht





yellow straw



grey



olive



leather brown



anthracite



# Minte

100% cotton satin, enzymed washed  
300TC, double stitch seam

100% katoen satijn, enzymen wassing,  
300TC, met double stitch afwerking

100% Baumwolle Satin, Enzym gewaschen,  
300TC, mit Doppelnaht





grey



moss



dusty green



ice blue



denim



nightblue



# Fleur (Festive)

100% cotton satin

100% katoen satijn

100% Baumwolle Satin





**FLEUR FESTIVE**  
blooming black



**FLEUR taupe**



**FLEUR nightblue**



**FLEUR ecru**





pistache



silver



sea green



stone



blue



white



anthracite





# Guy

*100% cotton renforcé, vintage washed,  
double stitch seam*

*100% katoen renforcé, vintage wassing,  
met double stitch afwerking*

*100% Baumwolle Renforcé, Enzym  
gewaschen, mit Doppelnaht*





# Fitted sheets

A matching fitted sheet is just as important as the duvet cover! As everyone has a different personal preference, we offer four different qualities of fitted sheets in our collection: The Perfect Organic Jersey (160 gr/m<sup>2</sup>), Minte (300TC), Premium Percale (200TC) and Satin (220TC).

	THE PERFECT ORGANIC JERSEY	MINTE	PREMIUM PERCALE	SATIN
Anthracite	●	●	●	●
Black	●			
Bright terra		●		
Burgundy	●	●		
Café noir	●			
Cement	●	●	●	●
Chocolate	●			
Denim	●	●		
Dusty green	●	●		
Dusty rose	●	●		
Fern yellow	●			
Forest green	●			
Grey		●		
Iceblue	●	●		
Leather brown	●	●		
Lilac	●			
Marsala	●		●	●
Moss	●	●	●	●
Mustard	●			
Nightblue	●	●	●	●
Olive	●	●		
Oyster	●	●	●	●
Pine green	●			
Purple breeze		●		
Silver	●		●	●
Steel grey	●			
Stone blue	●		●	●
White	●	●	●	●
Woodrose	●	●	●	●
Yellow straw		●		



# The Perfect Organic Jersey

Fitted sheets 95% cotton / 5% elastane, GOTS certified,  
160 gr/m<sup>2</sup> knitted

A good night's sleep is of utmost importance, making this sheet a must! The Perfect Organic Jersey fitted sheet from ESSENZA is made of 95% GOTS-certified organic cotton and 5% elastane. In combination with all-round elastic band, gives it an extra strong stretch quality for the perfect fit. The fabric is pilling free, which will keep the sheet super soft & smooth. In addition, this organic jersey is breathable and wonderfully kind to the skin. Sweet dreams!

## **Fitted sheet**

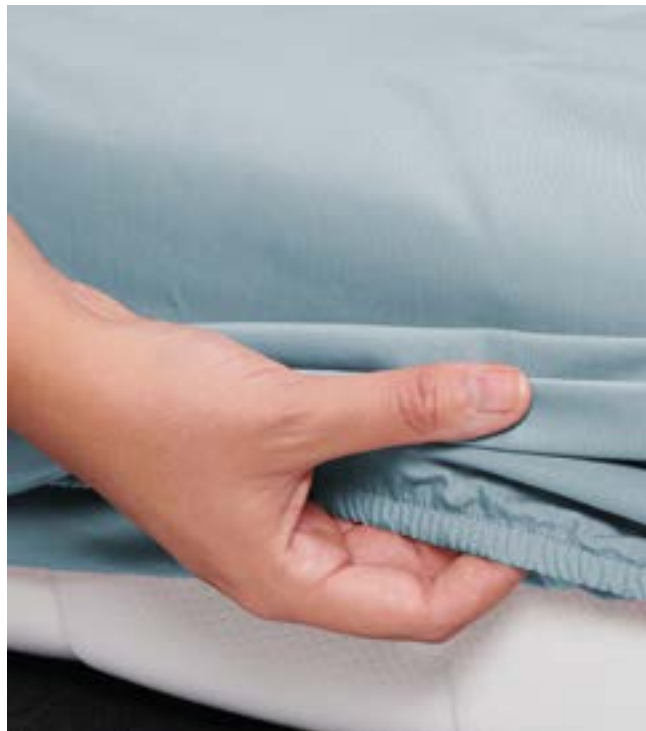
*All colors*

*Corner height 35 cm*

90/100x200/220 cm

140/160x200/220 cm

180/200x200/220 cm





-  Anthracite
-  Black
-  Burgundy
-  Café noir
-  Cement
-  Chocolate
-  Denim
-  Dusty green
-  Dusty rose
-  Fern yellow
-  Forest green
-  Iceblue
-  Leather brown
-  Lilac
-  Marsala
-  Moss
-  Mustard
-  Nightblue
-  Olive
-  Oyster
-  Pine green
-  Silver
-  Steel grey
-  Stone blue
-  White
-  Woodrose



# Minte

100% cotton satin, enzym washed, 100 gr/m<sup>2</sup>, 300TC

The ultimate soft and supple fabric of the Minte duvet cover in fitted sheets!

The Minte sheet is made from an extra high-quality cotton satin (300TC) and lasts for a very long time. The fabric is soft and smooth with a light shine and owes its beautiful, casual look to the special enzyme wash. The elastic all around the edges ensures a perfect fit. Ideal for a wonderfully comfortable night's sleep.

## Fitted sheet

All colors

Corner height 35 cm

80x200 cm	€44,95
90x200 cm	€49,95
90x210 cm	€54,95
140x200 cm	€59,95
160x200 cm	€64,95
180x200 cm	€69,95
200x200 cm	€89,95

## Topper fitted sheet

Only anthracite, cafe noir,  
moss & white

Corner height 14 cm

160x200 cm	€59,95
180x200 cm	€64,95
180x210 cm	€69,95
180x220 cm	€79,95



	Anthracite		Purple breeze
	Bright terra		White
	Burgundy		Woodrose
	Cement		Yellow straw
	Denim		
	Dusty green		
	Dusty rose		
	Grey		
	Iceblue		
	Leather brown		
	Moss		
	Nightblue		
	Olive		
	Oyster		

# Satin

Fitted sheet 100% cotton satin, 130 gr/m<sup>2</sup>, 220TC

The Satin program from ESSENZA is made from the finest 220TC combed cotton satin, so it feels soft and comfortable on the skin. The special weave gives this cotton satin a luxurious appearance and a light shine. The fabric is very easy to maintain, weighs 130 gr/m<sup>2</sup> and feels light and flexible.



## Fitted sheet

*All colors*

*Corner height 30 cm*

80x200 cm	€44,95
90x200 cm	€49,95
90x210 cm	€52,95
140x200 cm	€56,95
160x200 cm	€59,95
180x200 cm	€64,95

*Only oyster & white*

180x210 cm	€69,95
180x220 cm	€69,95

## Pillowcase

*with 5cm Oxford-border*

60x70 cm	€21,95
----------	--------

## Topper fitted sheet

*Only oyster & white*

*Corner height 13 cm*

80x200 cm	€39,95
90x200 cm	€44,95
90x210 cm	€47,95
140x200 cm	€49,95
160x200 cm	€54,95
180x200 cm	€59,95
180x210 cm	€64,95

## Flat sheet

*Only oyster & white*

160x260 cm	€49,95
240x260 cm	€64,95
270x260 cm	€69,95





# Premium Percale

Fitted sheet 100% cotton percale, 130 gr/m<sup>2</sup>, 200TC

The Premium Percale program from ESSENZA is made from the finest 200TC combed cotton percale, so it feels soft and gentle on the skin. The fabric has an easy-care finish and is therefore maintenance-friendly and wrinkle-free.



## Fitted sheet

All colors

Corner height 35 cm

80x200 cm	€44,95
90x200 cm	€49,95
90x210 cm	€52,95
90x220 cm	€53,95
100x200 cm	€54,95
120x200 cm	€55,95
140x200 cm	€56,95
160x200 cm	€59,95
160x210 cm	€62,95
180x200 cm	€64,95
180x210 cm	€69,95
180x220 cm	€69,95

## Pillowcase

60x70 cm	€21,95
----------	--------

## Topper fitted sheet

Only anthracite, oyster & white

Corner height 13 cm

90x200 cm	€44,95
90x210 cm	€47,95
140x200 cm	€49,95
160x200 cm	€54,95
180x200 cm	€59,95
180x210 cm	€64,95

## Flat sheet

Only oyster & white

180x280 cm	€49,95
240x280 cm	€64,95
270x280 cm	€69,95







# Duvets and Pillows

This ESSENZA collection of duvets and pillows, is developed with innovation and sustainability in mind. The collection consists of five different duvets and four pillows. With every product we are innovative in the use of materials and sustainable in the use of recycled or sustainably produced materials. With the use of both natural and synthetically produced materials, there is something for every sleeper.

The Perfect Circle



The Down Alternative



The Natural Wool



The New Classic Synthetic



The Recycled Down







**Summer duvet****Zomeredekbed****Sommerteil**

135x200 cm	€79,95
140x220 cm	€79,95
155x220 cm	€99,95
200x220 cm	€119,95
240x220 cm	€159,95
260x220 cm	€179,95

**Information:**

Stitching: crossed honeycomb stitching

Filling weight: 150 gr/m<sup>2</sup>

Heat class: 4

Weight category: Light

Warranty: 2 years on manufacturing defects

**All year duvet****Lente-Herfst dekbed****Herbstteil**

135x200 cm	€109,95
140x220 cm	€109,95
155x220 cm	€139,95
200x220 cm	€159,95
240x220 cm	€219,95
260x220 cm	€249,95

**Information:**

Stitching: crossed honeycomb stitching

Filling weight: 400 gr/m<sup>2</sup>

Heat class: 3

Weight category: medium

Warranty: 2 years on manufacturing defects

Maintenance tips: Ventilate and shake up regularly

**Four seasons duvet****Vier seizoenen dekbed****4-Jahreszeiten**

135x200 cm	€189,95
140x220 cm	€189,95
155x220 cm	€239,95
200x220 cm	€279,95
240x220 cm	€379,95
260x220 cm	€429,95

**Information:**

Stitching: crossed honeycomb stitching

Filling weight: 150 gr/m<sup>2</sup> (summerpart) 400 gr/m<sup>2</sup> (autumn part)

Heat class: combined 2

Weight category: combined heavy

Warranty: 2 years on manufacturing defects

Maintenance tips: Ventilate and shake up regularly

*(Merge parts together  
through including buttons)*

**Pillowcase****Kussen****Kopfkissen**

60x70 cm	€54,95
40x80 cm	€54,95
80x80 cm	€84,95

**Information:**

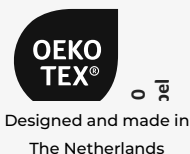
Filling weight: 800 gram

Warranty: 1 year on manufacturing defects

Maintenance tips: ventilate and shake up regularly



100% GRS Certified Polyester  
Certified by Control Union  
CU834378



Dacron® is a registered  
trademark of Advansa

# The Perfect Circle

Are you working towards a circular economy? Then The Perfect Circle is a step in the right direction! This synthetic duvet and pillow are made from the 100% recycled material. This high-quality polyester material can be recycled time and time again. The cover is made from a premium quality microfibre: beautifully softened with a peach finish. The filling of The Perfect Circle consists of 100% recycled synthetic fibres, made from old plastic bottles. This reduces the ecological footprint, because the environment and new raw materials are spared. For an extra special touch, the Aurelie design is subtly printed in the fabric. The bedding has also been treated against dust mites. That makes this duvet completely circular. And therefore one of the best green choices of all duvets.

**Filling/Vulling/Füllung:**

Dacron®Eco (100% recycled synthetic polyester fibre RPET)  
Dacron®Eco (100% gerecyclede synthetische polyester vezel RPET)  
Dacron®Eco (100% recycelte Polyester Faser RPET)

**Cover/Tijk/Bezug:**

100% Microfiber Premium, 100% recycled polyester with a peachskin finish and treated against dust mites  
100% Microfiber Premium, 100% gerecyclede polyester met peachskin finish en behandeld tegen huisstofmijt  
100% Premium Mikrofaser, 100% recycelter Polyester mit Peachskin-Finish. Ausgerüstet gegen Hausstaubmilben





**Summer duvet**  
**Zomerdekbed**  
**Sommerteil**

135x200 cm	€139,95
140x220 cm	€139,95
155x220 cm	€179,95
200x220 cm	€199,95
240x220 cm	€279,95
260x220 cm	€319,95

**Information:**

Filling weight: 200 gr/m<sup>2</sup>

Heat class: 4

Weight category: superlight

Warranty: 2 years on manufacturing defects

Maintenance tips: ventilate and shake up regularly

**All year duvet**  
**Lente-Herfst dekbed**  
**Herbstteil**

135x200 cm	€209,95
140x220 cm	€209,95
155x220 cm	€269,95
200x220 cm	€309,95
240x220 cm	€419,95
260x220 cm	€469,95

**Information:**

Filling weight: 400 gr/m<sup>2</sup>

Heat class: 3

Weight category: light

Warranty: 2 years on manufacturing defects

Maintenance tips: ventilate and shake up regularly

**Four seasons duvet**  
**Vier seizoenen dekbed**  
**4-Jahreszeiten**

135x200 cm	€349,95
140x220 cm	€349,95
155x220 cm	€449,95
200x220 cm	€509,95
240x220 cm	€699,95
260x220 cm	€789,95

**Information:**

Filling weight: 200 gr/m<sup>2</sup> (summerpart), 400 gr/m<sup>2</sup> (autumnpart)

Heat class: combined 2

Weight category: combined medium

Warranty: 2 years on manufacturing defects

Maintenance tips: ventilate and shake up regularly

*(Merge parts together  
through including buttons)*

PU



RE NEW WOOL

PURE NEW WOOL FILLING  
Batchnr. 130210222



# The Natural Wool

This filling is unique, innovative and blends the best of two worlds: pure sheared wool from the Texel sheep is mixed with ®. This results in a duvet that is wonderfully supple and airy and has the right insulation for all seasons.

Both sheared wool and ® are produced in a sustainable way and together create this delightful duvet. This duvet is natural, biodegradable and reusable. The wool comes from sheeps from Texel: the Texelaar. Usefull wool fibers grow from head to tail with this sheep. Both the virgin wool as the lyocell are produced sustainable and processed into this duvet cover. With this duvet you really have a Dutch products in hands, also the production is in a factory in The Netherlands.



**Filling/Vulling/Füllung:**

60% pure wool, 40% lyocell

60% scheerwol, 40% lyocell

60% reine waschbare Schurwolle, 40% Lyocell

**Cover/Tijk/Bezug:**

100% cotton satin (sustainably grown) 298TC

100% katoen satijn (duurzaam geteeld) 298TC

100% Baumwolle Satin (nachhaltig angebaut) 298TC





**Summer duvet**  
**Zomerkdekbed**  
**Sommerteil**

135x200 cm	€149,95
140x220 cm	€149,95
155x220 cm	€189,95
200x220 cm	€219,95
240x220 cm	€299,95
260x220 cm	€329,95

**Information:**

Filling weight: 110 gr/m<sup>2</sup>

Heat class: 4

Weight category: superlight

Warranty: 2 years on manufacturing defects

Maintenance tips: ventilate and shake up regularly

**All year duvet**  
**Lente-Herfst dekbed**  
**Herbstteil**

135x200 cm	€179,95
140x220 cm	€179,95
155x220 cm	€229,95
200x220 cm	€259,95
240x220 cm	€359,95
260x220 cm	€409,95

**Information:**

Filling weight: 180 gr/m<sup>2</sup>

Heat class: 3

Weight category: light

Warranty: 2 years on manufacturing defects

Maintenance tips: ventilate and shake up regularly

**Four seasons duvet**  
**Vier seizoenen dekbed**  
**4-Jahreszeiten**

135x200 cm	€319,95
140x220 cm	€319,95
155x220 cm	€399,95
200x220 cm	€469,95
240x220 cm	€639,95
260x220 cm	€699,95

**Information:**

Filling weight: 110 gr/m<sup>2</sup> (zomerdeel) 180 gr/m<sup>2</sup> (herfstdeel)

Heat class: combined 2

Weight category: combined medium

Warranty: 2 years on manufacturing defects

Maintenance tips: ventilate and shake up regularly

*(Merge parts together  
 through including buttons)*

**Pillowcase**  
**Kussen**  
**Kopfkissen**

60x70 cm	€109,95
40x80 cm	€109,95
80x80 cm	€159,95

**Information:**

Filling weight: 125 + 1.000 + 125 gram

Warranty: 1 year on manufacturing defects

Maintenance tips: ventilate and shake up regularly



100% GRS Certified Polyester  
 Certified by Control Union  
 CU834378



suitable for persons suffering from house dust allergy



Designed and made in  
 The Netherlands

# The Recycled Down

The down used for The Recycled Down has already had a very 'rewarding life'- but can last for many more years to come. The down from old, used duvets is collected and professionally washed. The best quality down is then selected to create The Recycled Down. The result: like new!

This entire recycling and production process takes place in The Netherlands. This supplier is the only company in the Netherlands that fully recycles duvets and pillows filled with down and feathers. In addition, 70% of the electricity involved in this process comes from solar panels. If the down cannot be re-used, organic fertilizer is made of this low-quality down. The cover of the old duvet is given a new life as cleaning cloth or insulation material. In this way, the entire duvet is recycled and the environment and new raw materials are spared.

**Filling/Vulling/Füllung:**

Ecodown® (100% recycled synthetic fibre)  
Ecodown® (100% gerecyclede synthetische vezel)  
Ecodown® (100% recycelte synthetische Fasern)

**Cover/Tijk/Bezug:**

100% cotton percale (sustainably grown), 233TC and treated against dust mites  
100% katoen perkal (duurzaam geteeld), 233 TC en behandeld tegen huisstofmijt  
100% Baumwolle Perkal (nachhaltig angebaut), 233 TC. Ausgerüstet gegen Hausstaubmilben





**Summer duvet**  
**Zomerdekbed**  
**Sommerteil**

135x200 cm	€109,95
140x220 cm	€109,95
155x220 cm	€139,95
200x220 cm	€159,95
240x220 cm	€219,95
260x220 cm	€239,95

**Information:**

Filling weight: 200 gr/m<sup>2</sup>

Heat class: 4

Weight category: light

Warranty: 2 years on manufacturing defects

Maintenance tips: ventilate and shake up regularly

**All year duvet**  
**Lente-Herfst dekbed**  
**Herbstteil**

135x200 cm	€129,95
140x220 cm	€129,95
155x220 cm	€169,95
200x220 cm	€189,95
240x220 cm	€259,95
260x220 cm	€299,95

**Information:**

Filling weight: 350 gr/m<sup>2</sup>

Heat class: 3

Weight category: medium

Warranty: 2 years on manufacturing defects

Maintenance tips: ventilate and shake up regularly

**Four seasons duvet**  
**Vier seizoenen dekbed**  
**4-Jahreszeiten**

135x200 cm	€239,95
140x220 cm	€239,95
155x220 cm	€309,95
200x220 cm	€349,95
240x220 cm	€479,95
260x220 cm	€539,95

**Information:**

Filling weight: 200 gr/m<sup>2</sup> (zomerdeel) 350 gr/m<sup>2</sup> (herfstdeel)

Heat class: combined 2

Weight category: combined zwaar

Warranty: 2 years on manufacturing defects

Maintenance tips: ventilate and shake up regularly

*(Merge parts together  
through including buttons)*

**Pillowcase**  
**Kussen**  
**Kopfkissen**

60x70 cm	€64,95
40x80 cm	€64,95
80x80 cm	€99,95

**Information:**

Filling weight: 1200 gram

Warranty: 1 year on manufacturing defects

Maintenance tips: ventilate and shake up regularly



100% GRS Certified Polyester  
Certified by Control Union  
CU834378



Het katoen gebruikt voor  
deze tijd is gemaakt van  
katoen dat geteeld is op  
verantwoorde wijze.

# The Down Alternative

Do you want the comfort of down but the practical properties of synthetic? The Down Alternative is the best solution. The duvet and pillow are generously filled with 100% Ecodown® which made from 100% recycled polyester, a recycled synthetic fiber made from old plastic bottles. This makes this duvet and pillow wonderfully soft, full and airy. The cotton cover has a thread count of 233 and is treated against dust mites. Best of both worlds and even good for the environment. Now that's what we call a good night's sleep.

**Filling/Vulling/Füllung:**

Ecodown® (100% recycled synthetic fibre)

Ecodown® (100% gerecyclede synthetische vezel)

Ecodown® (100% recycelte synthetische Fasern)

**Cover/Tijk/Bezug:**

100% cotton percale (sustainably grown), 233TC and treated against dust mites

100% katoen perkal (duurzaam geteeld), 233 TC en behandeld tegen huisstofmijt

100% Baumwolle Perkal (nachhaltig angebaut), 233 TC. Ausgerüstet gegen Hausstaubmilben





**Summer duvet**  
**Zomerdekbed**  
**Sommerteil**

135x200 cm	€189,95
140x220 cm	€189,95
155x220 cm	€219,95
200x220 cm	€279,95
240x220 cm	€339,95
260x220 cm	€379,95

**Information:**

Stitching: garland stitching

Filling weight: 200 gr/m<sup>2</sup> (summerpart) 400 gr/m<sup>2</sup> (autumn part)

Heat class: combined 2

Weight category: combined heavy

Warranty: 2 years on manufacturing defects

Maintenance tips: ventilate and shake up regularly

**Pillowcase**  
**Kussen**  
**Kopfkissen**

60x70 cm	€49,95
40x80 cm	€49,95
80x80 cm	€74,95

**Information:**

Filling weight: 800 gram

Warranty: 1 year on manufacturing defects

Maintenance tips: ventilate and shake up regularly



Designed and made in  
The Netherlands

# The New Classic Synthetic

Are you looking for a regular duvet and pillow? Then The New Classic Synthetic is a great choice. With a beautiful cotton cover and a high-quality synthetic hollow fiber filling, The New Classic Synthetic ensures years of wonderful sleep.

**Filling/Vulling/Füllung:**

100% Thermosoft synthetic fiber  
100% Thermosoft synthetische vezel  
100% synthetische Hohlfaser Thermosoft

**Cover/Tijk/Bezug:**

100% cotton (sustainably grown), 160TC  
100% katoen (duurzaam geteeld), 160 TC  
100% Baumwolle (nachhaltig angebaut), 160 TC





**WATERPROOF white**

*Fitted sheet 100% cotton /  
polyurethane*

60x120 cm	€34,95
80x200 cm	€54,95
90x200 cm	€59,95
90x210 cm	€64,95
140x200 cm	€79,95
160x200 cm	€89,95
180x200 cm	€99,95



**MOLTON white**

*Fitted sheet 100% cotton*

80x190 cm	€39,95
80x200 cm	€39,95
80x210 cm	€39,95
90x190 cm	€49,95
90x200 cm	€49,95
90x210 cm	€49,95
90x220 cm	€49,95
100x200 cm	€49,95
140x200 cm	€59,95
140x220 cm	€59,95
160x200 cm	€59,95
160x220 cm	€59,95
180x200 cm	€69,95
180x210 cm	€69,95
180x220 cm	€69,95



**MOLTON white**

*Pillowcase 100% cotton, 240gr/m<sup>2</sup>*

2x 60x70 cm	€29,95
2x 60x70 cm	€29,95

*(with zipper)*



**DALLAS white**

*Pillowcase 100% polyester satin*

60x70 cm	€12,95
----------	--------



**DALLAS oyster**

*Pillowcase 100% polyester satin*

60x70 cm	€12,95
----------	--------

60x70 cm









A teal velvet pouffe sits on a dark, patterned rug. A matching teal blanket is draped over its side, and a small bouquet of purple and blue flowers is tucked into the folds. The background is a light-colored wall with a wooden baseboard.

# Accessories

Accessories are the finishing touch when it comes to styling any interior! Add a couple of cushions, a snug plaid, an eye-catching carpet or velvety pouffe all to create a cohesive and warm interior with a personal touch. There's one thing all our accessories have in common, no matter which colour, fabric or print you'll choose: they are extremely soft!



# Dailah

70% recycled polyester / 30% polyester velvet with piping filling: 100% recycled polyester

roll cushion 22x50 cm (filled)

€39,95



cement



ice blue



dark green



rabarber



shell brown

# Naina

70% recycled polyester / 30% polyester velvet filling: 100% recycled polyester

cushion round 40 cm (filled)

€39,95



mustard



moss



cinnamon



denim



canyon rose



dusty lilac



# Mads

70% viscose / 30% linen  
filling: 100% recycled polyester

cushion round 45 cm (filled)

€39,95

New



dark teal



verdant green



ochre

# Gigi

70% viscose / 30% linen  
filling: 100% recycled polyester

cushion round 45 cm (filled)

€39,95

New



cherry pink



dry terra



pale beach



# Ruth

70% recycled polyester / 30% polyester enzyme washed microfibre filling: 100% recycled polyester

plaid 150x200 cm  
quilt 180x265 cm  
quilt 220x265 cm  
quilt 270x265 cm

€89,95  
€129,95  
€159,95  
€189,95



thyme



balsam



laurel green



nightblue



grape



wine red



cream



shell brown





# Billie

70% recycled polyester / 30% polyester corduroy  
wadding: 100% recycled polyester  
filling cushion: 100% recycled polyester

cushion 30x50 cm (filled)

€39,95

plaid 150x200 cm

€89,95

quilt 180x265 cm

€129,95

quilt 220x265 cm

€159,95

quilt 270x265 cm

€189,95



darkest brown



darkest brown



meringue



meringue



dark green



dark green



frosty mint



frosty mint



mustard



mustard



nightblue



nightblue



cinnamon



cinnamon

# Julia

100% cotton velvet  
filling: 100% recycled polyester

cushion 40x90 cm (filled)	€59,95
plaid 150x200 cm	€149,95
quilt 180x265 cm	€219,95
quilt 220x265 cm	€299,95



mauve



mauve



denim



denim



brulee



brulee



nightblue



nightblue



forest green



forest green



sand



sand

# Roeby

70% recycled polyester / 30% polyester velvet  
wadding: 50% recycled polyester / 50% cotton  
filling cushions: 100% recycled polyester

cushion 30x50 cm (filled)

plaid 150x200 cm

quilt 180x265 cm

quilt 220x265 cm

quilt 270x265 cm

€119,95

€189,95

€219,95

€289,95



leather brown



leather brown



pine green



pine green



moss



moss



chocolate



chocolate





# Furry

cushions and roll cushions:

100% polyester fake fur

filling: 100% polyester

plaid:

front: 100% polyester fake fur

back: 100% polyester micro mink

roll cushion 22x50 cm (filled)

€39,95

cushion 50x50 cm (filled)

€34,95

cushion round 45 cm (filled)

€44,95

plaid 150x200 cm

€109,95

New



reef green

New



reef green

New



reef green



leather brown



leather brown



leather brown



bright terra



bright terra



bright terra

New



bright terra



moss



mos



moss

New



leather brown



rose



rose



rose



taupe



taupe



taupe



vanilla



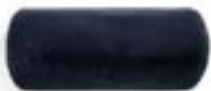
vanilla



vanilla



vanilla



nightblue



nightblue



nightblue



nightblue



denim



denim



denim



denim

# Isabelle

## cushions:

100% polyester velvet with piping

filling: 100% recycled polyester

## quilt and plaids:

100% polyester velvet

wadding: 100% polyester

cushion 40x90 cm (filled)

€59,95

plaid 135x170 cm

€109,95

bed runner 240x100 cm

€109,95

quilt 180x265 cm

€179,95

quilt 220x265 cm

€209,95

quilt 270x265 cm

€239,95



clay



marsala



marsala



forest green



forest green



balsam



balsam



darkest brown



darkest brown



# Fleur

cushions:

100% polyester velvet with piping

filling: 100% recycled polyester

quilt and plaids:

100% polyester velvet

wadding: 100% polyester

cushion 50x50 cm (filled)

€39,95

roll cushion 22x50 cm (filled)

€44,95

plaid 135x170 cm

€109,95

bed runner 240x100 cm

€109,95

quilt 180x265 cm

€179,95

quilt 220x265 cm

€209,95

quilt 270x265 cm

€239,95



**burgundy**



**burgundy**



**taupe**



**grey**



**grey**



**grey**



**nightblue**



**nightblue**



**moss**



**moss**



café noir



café noir



café noir



nightblue



nightblue



nightblue

# Shelley

cushions and roll cushions:  
100% polyester fake fur  
filling: 100% polyester

quilt and plaids:  
front: 100% polyester fake fur  
back: 100% polyester micro mink

cushion 50x50 cm (filled)  
roll cushion 22x50 cm (filled)  
plaid 150x200 cm

# Teddy

cushions and roll cushions:  
100% polyester fake fur  
filling: 100% polyester

quilt and plaids:  
front: 100% polyester fake fur  
back: 100% polyester micro mink

cushion 50x50 cm (filled)	€34,95
roll cushion 22x50 cm (filled)	€39,95
plaid 150x200 cm	€69,95







# Knitted Ajour

100% organic cotton, GOTS certified  
filling cushions: 100% recycled polyester

cushion 30x50 cm (filled)	€39,95
cushion 50x50 cm (filled)	€49,95
plaid 130x170 cm	€89,95



fern yellow



fern yellow



fern yellow



morning swim



morning swim



morning swim

# Print accessories

100% recycled polyester velvet, with piping  
 100% polyester velvet, with piping\*  
 filling: 100% recycled polyester

cushion 30x50 cm (filled)	€34,95
cushion 50x50 cm (filled)	€39,95
roll cushion 22x50 cm (filled)	€44,95
cushion 40x90 cm (filled)	€59,95

New



Karli reef green

New



Karli darling pink



Ophelia midnight swim



Colette pure white



Ophelia nightblue



Ophelia sahara sun



Lisa silk\*



Ophelia nightblue



Ophelia midnight swim



Ophelia sahara sun



Ophelia sahara sun



Iva jade green



Iva jade green



# Print accessories

front: 100% recycled polyester velvet  
back: 70% recycled polyester, 30% polyester  
filling: 100% recycled polyester

\* 100% polyester velvet  
filling: 100% polyester

plaid 135x170 cm	€109,95
bed runner 240x100 cm	€109,95
quilt 180x265 cm	€179,95
quilt 220x265 cm	€209,95
quilt 270x265 cm	€239,95



Ophelia sahara sun



Lisa silk\*



Ophelia midnight swim



Ophelia nightblue





# Poufs

The most beautiful prints from our collections are being showcased on our elegant velvet poufs. These poufs aren't just a picture to behold, they are incredibly versatile - use them as a side table, additional seat or as a night stand.

polyester velvet Ø 60 cm, height 37 cm

€149,95

\*polyester fake fur Ø 60 cm, height 37 cm

€159,95



Ophelia nightblue



Ophelia midnight swim



Isabelle balsam



Isabelle clay





Teddy café noir\*



Teddy café noir\*



Teddy vanilla\*



Shelley nightblue\*



New



Karli reef green\*\*



Isabelle marsala



Furry leather brown\*

New



Karli darling pink\*\*



Isabelle darkest brown



Furry denim\*



Ophelia sahara sun



Isabelle forest green



Furry chocolate\*



Lisa silk



Ophelia hazy blue





# Poufs

polyester velvet  
\*polyester (fake fur)

Ø 40 cm, 43 cm height

€99,95





# Carpets



60% polyester / 30% thermoplastic polyurethane / 10% cotton

carpet 60x90 cm	€44,95
carpet 120x180 cm	€129,95
carpet 180x240 cm	€229,95





New



Floor nightblue

New



Karli darling pink

New



Tesse reef green



Ophelia nightblue



Maere hazy blue



Fleur taupe



Ophelia midnight swim



Fleur ecru



Fleur nightblue



Fleur grey



Ophelia nightblue



Fleur finest grey



Ophelia midnight swim



Isabelle balsam



Isabelle marsala



Isabelle clay





# Carpets

60% polyester / 30% thermoplastic polyurethane / 10% cotton

carpet round 90 cm

€54,95

carpet round 180 cm

€169,95





# Beach towels

With ESSENZA's beach towels you will steal the show when you head to the beach! Our velours beach towels are made from organic cotton that's GOTS certified - which means it has been organically grown and manufactured in an environmentally friendly and socially responsible way.

100% organic cotton velours, GOTS certified, 400 gr/m<sup>2</sup>  
with logo in gold embroidery  
beach towel 100x180 cm

€59,95





Fela sloe blue



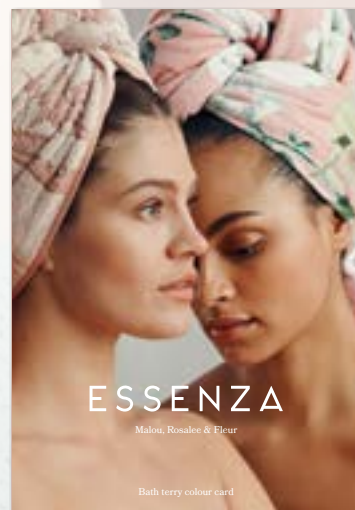
Ophelia hazy blue



# Bath textiles

All ESSENZA terry - excluding the Fleur series - is made from 100% organic cotton, GOTS certified. This means that the cotton is organically grown with no pesticides and that the towels are produced in an environmentally friendly and socially responsible manner. Great for your skin and great for the environment.

A sustainable choice!



**MALOU, ROSALEE  
& FLEUR bath terry  
colour card**

paper, A4

€9,95



# Rosalee

100% organic cotton velours, GOTS certified  
500 gr/m<sup>2</sup>, with logo in gold embroidery

washcloth 16x22 cm	€5,95
guest towel 30x50 cm	€9,95
hand towel 55x100 cm	€24,95
bath towel 70x140 cm	€44,95



natural



green



blue



yellow



rose



plum



grey

# Malou

100% organic cotton velours,  
jacquard woven, GOTS certified  
500 gr/m<sup>2</sup>, with logo in gold embroidery

washcloth 16x22 cm	€4,95
guest towel 30x50 cm	€8,95
hand towel 55x100 cm	€19,95
bath towel 70x140 cm	€39,95



natural



green



blue



yellow



rose



plum

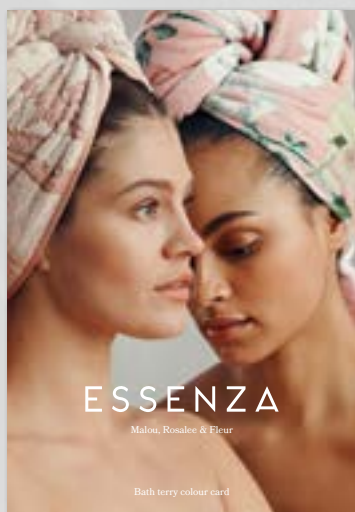


grey



# Fleur towels

Super soft towels with a floral edge that make a statement. They'll turn any shower or bathing session into a party!



**MALOU, ROSALEE  
& FLEUR bath terry  
colour card**  
paper, A4

€9,95

**ESSENZA**

Malou, Rosalee & Fleur

Bath terry colour card

# Fleur

97% cotton / 3% polyester, 530 gr/m<sup>2</sup>

*washcloth 16x22 cm	€4,95
guest towel 30x50 cm	€6,95
hand towel 60x110 cm	€17,95
bath towel 70x140 cm	€29,95



natural



green



dark green\*



rose



blue



dusty rose\*



plum\*



taupe\*



yellow\*



# Connect Organic



## CONNECT ORGANIC UNI green

100% organic cotton, GOTS certified, 600 gr/m<sup>2</sup>

washcloth 16x22 cm	€6,95
guest towel 30x50 cm	€9,95
hand towel 50x100 cm	€22,95
hand towel 60x110 cm	€27,95
bath towel 70x140 cm	€39,95



## CONNECT ORGANIC UNI blue

100% organic cotton, GOTS certified, 600 gr/m<sup>2</sup>

washcloth 16x22 cm	€6,95
guest towel 30x50 cm	€9,95
hand towel 50x100 cm	€22,95
hand towel 60x110 cm	€27,95
bath towel 70x140 cm	€39,95



## CONNECT ORGANIC UNI green

100% organic cotton, GOTS certified, 1100 gr/m<sup>2</sup>

bathmat 60x100 cm	€39,95
-------------------	--------

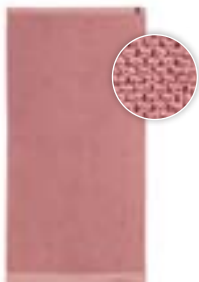


## CONNECT ORGANIC UNI blue

100% organic cotton, GOTS certified, 1100 gr/m<sup>2</sup>

bathmat 60x100 cm	€39,95
-------------------	--------





**CONNECT ORGANIC UNI rose**

100% organic cotton, GOTS certified, 600 gr/m<sup>2</sup>

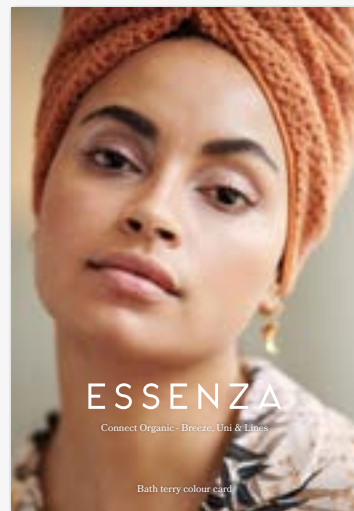
washcloth 16x22 cm	€6,95
guest towel 30x50 cm	€9,95
hand towel 50x100 cm	€22,95
hand towel 60x110 cm	€27,95
bath towel 70x140 cm	€39,95



**CONNECT ORGANIC UNI rose**

100% organic cotton, GOTS certified, 1100 gr/m<sup>2</sup>

bathmat 60x100 cm



€9,95

**CONNECT ORGANIC  
BREEZE, UNI & LINES**  
bath terry colour card  
paper, A4



# Connect Organic



## CONNECT ORGANIC UNI white

100% organic cotton, GOTS certified, 600 gr/m<sup>2</sup>

washcloth 16x22 cm	€6,95
guest towel 30x50 cm	€9,95
hand towel 50x100 cm	€22,95
hand towel 60x110 cm	€27,95
bath towel 70x140 cm	€39,95



## CONNECT ORGANIC UNI natural

100% organic cotton, GOTS certified, 600 gr/m<sup>2</sup>

washcloth 16x22 cm	€6,95
guest towel 30x50 cm	€9,95
hand towel 50x100 cm	€22,95
hand towel 60x110 cm	€27,95
bath towel 70x140 cm	€39,95



## CONNECT ORGANIC UNI white

100% organic cotton, GOTS certified, 1100 gr/m<sup>2</sup>

bathmat 60x100 cm	€39,95
-------------------	--------



## CONNECT ORGANIC UNI natural

100% organic cotton, GOTS certified, 1100 gr/m<sup>2</sup>

bathmat 60x100 cm	€39,95
-------------------	--------



**CONNECT ORGANIC UNI grey**

100% organic cotton, GOTS certified, 600 gr/m<sup>2</sup>

washcloth 16x22 cm	€6,95
guest towel 30x50 cm	€9,95
hand towel 50x100 cm	€22,95
hand towel 60x110 cm	€27,95
bath towel 70x140 cm	€39,95

**CONNECT ORGANIC UNI grey**

100% organic cotton, GOTS certified, 1100 gr/m<sup>2</sup>

bathmat 60x100 cm	€39,95
-------------------	--------



# Printed towels

100% organic cotton velours, GOTS certified  
500 gr/m<sup>2</sup>, with logo in gold embroidery

guest towel 30x50 cm  
hand towel 55x100 cm  
bath towel 70x140 cm

€9,95  
€24,95  
€44,95

New



Sol reef green

New



Karli reef green



# Printed towels

100% organic cotton velours, GOTS certified  
500 gr/m<sup>2</sup>, with logo in gold embroidery

guest towel 30x50 cm  
hand towel 55x100 cm  
bath towel 70x140 cm

€9,95  
€24,95  
€44,95

New



Ophelia darling pink

New



Sol darling pink



# Bathrobes, Homecoats & Kimono's





**NAMA rose**  
100% polyester  
homecoat XS-XXL

€99,95



**NAMA sloe blue**  
100% polyester  
homecoat XS-XXL

€99,95



**ROSA UNI dark navy**  
74% polyester, 23% viscose, 3% elastane  
homecoat XS-XXL

€129,95



**CONNECT ORGANIC UNI rose**  
100% organic cotton, GOTS certified, 420 gr/m<sup>2</sup>  
bathrobe XS-XL

€119,95



**CONNECT ORGANIC UNI blue**  
100% organic cotton, GOTS certified, 420 gr/m<sup>2</sup>  
bathrobe XS-XL

€119,95



**CONNECT ORGANIC UNI green**  
100% organic cotton, GOTS certified, 420 gr/m<sup>2</sup>  
bathrobe XS-XL

€119,95



**CONNECT ORGANIC UNI white**  
100% organic cotton, GOTS certified, 420 gr/m<sup>2</sup>  
bathrobe XS-XL

€119,95



**LOUISE moss**  
60% cotton / 40% polyester  
bathrobe XS-XXL

€59,95



**LOUISE chocolate**  
60% cotton / 40% polyester  
bathrobe XS-XXL

€59,95



**LOUISE navy**  
60% cotton / 40% polyester  
bathrobe XS-XXL

€59,95

New



**PERRI OPHELIA darling pink**

100% organic cotton velours, GOTS certified,  
380 gr/m<sup>2</sup>

bathrobe XS-XXL

€119,95



**FLEUR taupe**

100% polyester fleece

homecoat XS-XXL

€69,95

New



**PERRI KARLI reef green**

100% organic cotton velours, GOTS certified,  
380 gr/m<sup>2</sup>

bathrobe XS-XXL

€119,95



**FLEUR nightblue**

100% polyester fleece

homecoat XS-XXL

€69,95



**PERRI ROSALEE blue**

100% organic cotton velours, GOTS certified,  
380 gr/m<sup>2</sup>

bathrobe XS-XXL

€119,95



**PERRI ROSALEE rose**

100% organic cotton velours, GOTS certified,  
380 gr/m<sup>2</sup>



**FLEUR ecru**

100% polyester fleece

homecoat XS-XXL

€69,95







**JULA DAFFODILS REUNITED black**  
100% cotton satin  
kimono (ankle length) XS-XXL



**JULA KARLI magnolia pink**  
100% cotton satin  
kimono (ankle length) XS-XXL



**SARAI TILIA navy**  
100% cotton  
kimono XS-XXL €99,95



**SARAI TILIA pure white**  
100% cotton  
kimono XS-XXL €99,95



**SARAI LENTHE sloe blue**  
100% cotton satin  
kimono XS-XXL €49,95







New



**SARAI FLORA nightblue**  
100% cotton satin  
kimono XS-XXL €49,95

New



**SARAI KARLI deep sea blue**  
100% cotton satin  
kimono XS-XXL €49,95

New



**SARAI KARLI magnolia pink**  
100% cotton satin  
kimono XS-XXL €49,95



**SARAI KARLI darling pink**  
100% cotton satin  
kimono XS-XXL €49,95



**SARAI KARLI reef green**  
100% cotton satin  
kimono XS-XXL €49,95



**SARAI OPHELIA midnight swim**  
100% cotton satin  
kimono XS-XXL €49,95



**SARAI FLEUR FESTIVE blooming black**  
100% cotton satin  
kimono XS-XXL €49,95



**FLEUR nightblue**  
100% cotton satin  
kimono XS-XXL €49,95



**FLEUR rose**  
100% cotton satin  
kimono XS-XXL €49,95



**FLEUR ecru**  
100% cotton satin  
kimono XS-XXL €49,95







# Bags

From make up bag to weekend bag: whatever make-up bag you're looking for, ESSENZA has a matching beauty to transport your belongings.

outside: 100% cotton quilted (PVC free)  
inside: 100% polyester (PVC free)



New

## MEGAN KARLI reef green

B 20 cm x D 8 cm x H 11 cm

make-up bag

€39,95



New

## MEGAN KARLI darling pink

B 20 cm x D 8 cm x H 11 cm

make-up bag

€39,95



New

## TRACY KARLI reef green

B 25 cm x D 17 cm x H 17 cm

beautycase

€59,95



New

## TRACY KARLI darling pink

B 25 cm x D 17 cm x H 17 cm

beautycase

€59,95





**MEGAN JULIETTE almost black**  
B 20 cm x D 8 cm x H 11 cm  
make-up bag €39,95



**PEPPER JULIETTE almost black**  
B 28 cm x D 13 cm x H 17 cm  
toilet bag €49,95



**TRACY JULIETTE almost black**  
B 25 cm x D 17 cm x H 17 cm  
beautycase €59,95



**MEGAN OPHELIA nightblue**  
B 20 cm x D 8 cm x H 11 cm  
make-up bag €39,95



**MEGAN OPHELIA midnight swim**  
B 20 cm x D 8 cm x H 11 cm  
make-up bagmake-up bag €39,95



**PEPPER OPHELIA nightblue**  
B 28 cm x D 13 cm x H 17 cm  
toilet bag €49,95



**PEPPER OPHELIA midnight swim**  
B 28 cm x D 13 cm x H 17 cm  
toilet bag €49,95



**TRACY OPHELIA nightblue**  
B 25 cm x D 17 cm x H 17 cm  
beautycase €59,95



**TRACY OPHELIA midnight swim**  
B 25 cm x D 17 cm x H 17 cm  
beautycase €59,95

# Bags

outside: 100% polyester velvet (PVC free)  
inside: 100% polyester (PVC free)

The underside has a protective PU layer.



**MEGAN TEDDY leather brown**  
B 20 cm x D 8 cm x H 11 cm

make-up bag €29,95



**TRACY TEDDY vanilla**  
B 25 cm x D 17 cm x H 17 cm

beautycase €44,95



**PEYTON TEDDY leather brown**  
B 42 cm x D 12,5 cm x H 35 cm

shoulder bag €59,95



**PEYTON TEDDY vanilla**  
B 42 cm x D 12,5 cm x H 35 cm

shoulder bag €59,95



**PEBBLES TEDDY leather brown**  
B 50 cm x D 20 cm x H 30 cm

weekender €99,95



**PEBBLES TEDDY vanilla**  
B 50 cm x D 20 cm x H 30 cm

weekender €99,95





**TRACY TEDDY nightblue**

B 25 cm x D 17 cm x H 17 cm

beautycase

€44,95



**PEBBLES TEDDY nightblue**

B 50 cm x D 20 cm x H 30 cm

weekender

€99,95





# Discover more

Scan the QR code and discover the other product groups!



Fragrances



The Homewear Collection  
Fall/Winter 2023



Porcelain  
Table & Kitchen Linen



ESSENZA for Mauritshuis

Meet ESSENZA & CO



ESSENZA & CO  
ESSENZA & CO



# Merchandise

Would you like to occasionally surprise your customers with something extra? Then these promotional items from ESSENZA are exactly what you need! A stylish notebook that closes with a handy elastic or a lovely shopper that perfectly matches a duvet cover. Pick your favourite!

- Shopper, 100% polypropylene\*  
B 45 cm x D 12 cm x H 35 cm €9,95
- XL shopper, 100% polypropylene\*\*  
B 60 cm x D 20 cm x H 40 cm €11,95
- Notebook, paper  
A5 €12,95



Aurelie iceblue\*\*



Floral girl black



Florence multi\*\*



Verena antique white\*\*



Isabelle marsala\*\*



Carice multi\*





Diem nightblue



Scarlett vanilla



Verena antique white



Aurelie iceblue



Gwyneth nightblue



Diem nightblue



Carice multi



Isabelle marsala



Lauren indigo blue



Floral girl black



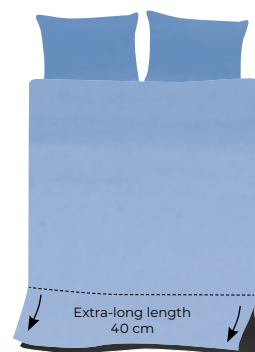
Fauve antique white

# Size chart

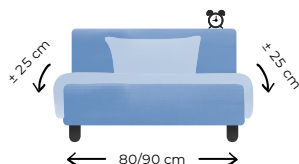
ENGLISH/NEDERLANDS

What size of fitted sheet and duvet cover do you need? This table lets you see the common sizes of the fitted sheets and duvet covers for every bed or mattress size. Please note that these are the most logical sizes, but it can of course be that someone has a relatively narrow or wide duvet on their bed. Therefore, always refer to the size of the duvet. If the customer does not know this then ask to which extent the duvet drapes over the sides of the bed. From this you should be able to deduce what size of duvet cover the customer requires.

All our duvet covers have an extra-long length of 260 cm, this includes a tuck-in strip of 40 cm. This extra-long length means they are suitable for almost every kind of duvet and mattress and they can even be used for a box spring with extra thick mattress.



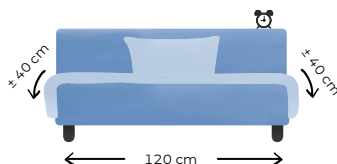
## Single



**Recommended size fitted sheet**  
80 or 90 x 200 cm (percale/satin)  
90/100 x 200/220 cm (jersey)

**Recommended size duvet (cover)**  
140 x 200/220 cm

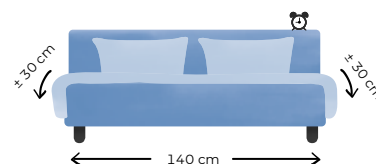
## Queen size



**Recommended size fitted sheet**  
120 x 200 cm (percale/satin)  
90/100 x 200/220 cm (jersey)

**Recommended size duvet (cover)**  
200 x 200/220 cm

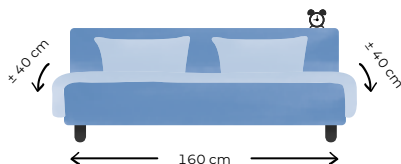
## Small double



**Recommended size fitted sheet**  
140 x 190/200 cm (percale/satin)  
140/160 x 200/220 cm (jersey)

**Recommended size duvet (cover)**  
200 x 200/220 cm

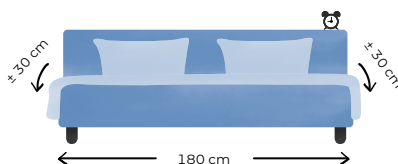
## Standard double



**Recommended size fitted sheet**  
160 x 200 cm (percale/satin)  
140/160 x 200/220 cm (jersey)

**Recommended size duvet (cover)**  
240 x 200/220 cm

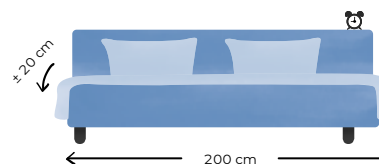
## Large double



**Recommended size fitted sheet**  
180 x 200 cm (percale/satin)  
180/200 x 200/220 cm (jersey)

**Recommended size duvet (cover)**  
240 x 200/220 cm  
260 x 200/220 cm

## King-size double



**Recommended size fitted sheet**  
180 x 200 cm (percale/satin)  
180/200 x 200/220 cm (jersey)

**Recommended size duvet (cover)**  
240 x 200/220 cm  
260 x 200/220 cm



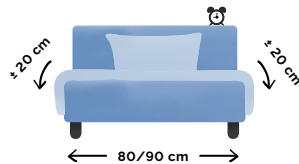




# Größentabelle

Welche Größe benötigen Sie beim Spannbettlaken und welche Größe bei der Bettwäsche? In dieser Übersicht zeigen wir Ihnen die gängigen Größen für jedes Bett und jede Matratzengröße. Bitte beachten Sie, dass dies nur die logischen Zusammengehörigkeiten sind. Es kann natürlich persönliche Unterschiede geben, wenn zum Beispiel ein schmales Bett vorhanden ist, aber eine große Bettdecke gewünscht wird.

## Einpersonen



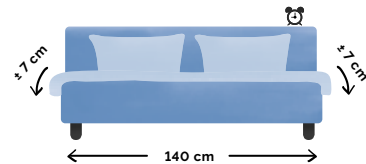
### Vorgeschlagene Größe Spannbettlaken

90 x 200 cm (Perkal/Satin)  
90/100 x 200/220 cm (Jersey)

### Vorgeschlagene Größe Bettwäsche

135 x 200 cm

## Kleines Zweipersonen



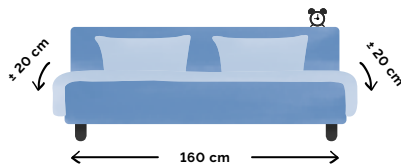
### Vorgeschlagene Größe Spannbettlaken

140 x 200 cm (Perkal/Satin)  
140/160 x 200/220 cm (Jersey)

### Vorgeschlagene Größe Bettwäsche

155 x 220 cm

## Standard Zweipersonen



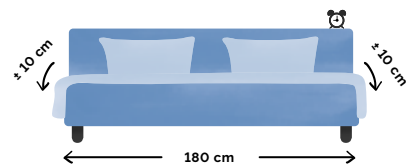
### Vorgeschlagene Größe Spannbettlaken

160 x 200 cm (Perkal/Satin)  
A

### Vorgeschlagene Größe Bettwäsche

200 x 200 cm

## Großes Zweipersonen



### Vorgeschlagene Größe Spannbettlaken

180 x 200 cm (Perkal/Satin)  
180/200 x 200/220 cm (Jersey)

### Vorgeschlagene Größe Bettwäsche

200 x 200 cm

# All about the fabrics

The ESSENZA FW'23 collection features a range of carefully selected fabrics, each with its own unique qualities to provide a personalized sleeping experience. Discover the benefits of each fabric here.

## 100% COTTON SATIN

**100% cotton satin is soft & sleek, with a subtle sheen which creates a sumptuous look and feel in every bedroom. This material is without a doubt our favourite fabric for bedding.**

- Naturally breathable and absorbent.
- Soft and smooth feel, and due to the special sateen weave, a nice sheen.
- Perfect for year-round use.
- Sateen weave makes the bedding wrinkle-resistant: no need to iron.
- Every ESSENZA item is designed to last, even after years of use.
- Oeko-Tex certified: the certification ensures that this product has been tested and verified to be free from harmful substances and skin-friendly.

## 100% ORGANIC COTTON SATIN, GOTS CERTIFIED, 300TC

**This premium 100% cotton satin material is soft & sleek, with a subtle sheen which creates a sumptuous look and feel in every bedroom. This smooth-as-butter material is without a doubt our favourite fabric for bedding. The extra fine yarn combined with the satin weave and the supremely high-quality 300 thread-count is soft and durable with a smooth and shiny feel that only gets better with time.**

- 100% organically grown cotton: naturally breathable and absorbent.
- Soft and smooth feel and due to the special sateen weave, a nice sheen.
- Perfect for year-round use.
- Better for the planet, the employees who make this fabric and your skin.
- Sateen weave makes the bedding wrinkle-resistant: no need to iron.
- Every ESSENZA item is designed to last, even after years of use.
- GOTS certified: the certification ensures that this product has been produced and processed following strict environmental and social criteria.

## 100% COTTON SATIN, 300TC

**This premium material is made of the finest cotton satin.**

**Thanks to the fine yarn in combination with the satin weave, the high 300 thread count and the special washing process, the duvet cover gains shine and feels supple.**

**An unprecedentedly velvet-soft duvet cover.**

- Extremely soft, absorbent and breathable.
- Perfect for year-round use.
- Gets softer with every wash. For the look of this product we advise you not to iron.
- Every ESSENZA item is designed to last, even after years of use.
- Oeko-Tex certified: the certification ensures that this product has been tested and verified to be free from harmful substances and skin-friendly.

## 50% COTTON SATIN / 50% LYOCELL , 300TC

**This premium fabric is made out of 50% cotton satin and 50% lyocell . This blend results in a silky-smooth, environmentally friendly material with a natural sheen.**

- Lyocell is a sustainable material made from fast-growing eucalyptus or birch trees that grow well in even the most depleted soils without irrigation and with few pesticides or herbicides. No toxic chemicals and less water are used during the production process.
- Silky and smooth feel. Cooling and breathable.
- The high 300 thread-count is soft and durable. Smooth surface: ensuring natural comfort for a sensitive skin.
- Warm in the winter and cool in the summer. A fine choice year-round.
- Every ESSENZA item is designed to last, even after years of use.
- Oeko-Tex certified: the certification ensures that this product has been tested and verified to be free from harmful substances and skin-friendly.

## 100% BAMBOO VISCOSE, 300 TC

**Made of 100% bamboo viscose, this premium fabric is durable and has a smooth and silky feel. The supremely high 300 thread-count makes the fabric soft and luxurious.**

- Extremely soft, silky and breathable.
- As bamboo is the fastest-growing plant in the world, it does not require fertilisers or other pesticides.
- Bamboo bedding is hypoallergenic, so perfect for a sensitive skin.
- Warm in the winter and cool in the summer. A fine choice year-round.
- Every ESSENZA item is designed to last, even after years of use.
- This ESSENZA item is designed to last, even after years of use.
- Oeko-Tex certified: the certification ensures that this product has been tested and verified to be free from harmful substances and skin-friendly.







### 100% COTTON JERSEY, GOTS-CERTIFIED

This 100% organic cotton jersey fabric, GOTS certified, is just like your favourite t-shirt. Ultra-cozy bedding with a stretchy texture, suitable for every season.

- 100% organically grown cotton: naturally breathable and absorbent.
- Smooth, soft comfort and wrinkle-free.
- Perfect for year-round use.
- Every ESSENZA item is designed to last, even after years of use.
- GOTS certified: the certification ensures that this product has been produced and processed following strict environmental and social criteria. Better for the planet, the employees who make this fabric and your skin.

### 100% COTTON FLANNEL

This 100% cotton flannel fabric is super snuggly and seriously soft. A warm fabric, ideal for the chilly winter nights.

- This 100% natural cotton is brushed to create an undeniably softness, with a woolly look and feel.
- It's as soft as a lived-in shirt with the elegance of a premium material.
- Breathable and moisture absorbent. The soft fabric adapts directly to your body temperature.
- Low-maintenance: gets softer with every wash.
- Every ESSENZA item is designed to last, even after years of use.
- Oeko-Tex certified: the certification ensures that this product has been tested and verified to be free from harmful substances and skin-friendly.

### 100% COTTON TWILL

**This fabric is made out of 100% cotton twill with a peach finish, a delightfully supple, inelastic fabric with a twill weave that exposes the subtle diagonals in the fabric.**

- Naturally breathable and absorbent.
- Seriously soft with a warm look and feel: ideal for chilly winter nights.
- The peach finish, obtained by lightly brushing the fabric for a soft, suede feel, makes this material perfect for colder days.

- Every ESSENZA item is designed to last, even after years of use.
- Oeko-Tex certified: the certification ensures that this product has been tested and verified to be free from harmful substances and skin-friendly.

### 100% COTTON RENFORCÉ

**Made out of 100% washed cotton renforcé. Crafted from high-quality, durable material, this duvet cover features a unique texture that is soft to the touch.**

- Naturally breathable and absorbent.
- The special washing gives the fabric an extra soft feel and a slightly worn-in appearance, giving it a vintage look. The colour will vary slightly from product to product and will fade into a softer shade when using and washing.
- Gets softer with every wash. For the look of this product we advise you not to iron.
- Every ESSENZA item is designed to last, even after years of use.
- Oeko-Tex certified: the certification ensures that this product has been tested and verified to be free from harmful substances and skin-friendly.

### 100% COTTON (BRODERIE ANGLAISE)

This 100% cotton fabric guarantees a good night's rest.

This stylish fabric features a crisp, clean weave – garment washed for a supersoft, lived-in finish.

- Naturally breathable and absorbent.
- Woven and washed with a special technique to ensure the bedding feels super soft.
- Perfect for year-round use.
- Easy to wash and incredibly long-lasting quality.
- Every ESSENZA item is designed to last, even after years of use.
- Oeko-Tex certified: the certification ensures that this product has been tested and verified to be free from harmful substances and skin-friendly.

# Our sustainability journey

**Sustainability is a big theme at ESSENZA. We cannot– and do not want to – ignore this in today’s world. It is not only an important point for us and for the environment, but also for all future generations. This is why we work and produce with as much care and attention as possible for people, the environment and society. We are continuously working to make our organisation – and in particular, our development and production process – more sustainable and to take our social responsibility to all links in the chain.**

## Our CSR mission and vision

We have made it our own social mission to ensure a great nights’ sleep for EVERYone. And we don’t just limit that mission to the consumer enjoying our lovely soft bedding and delightful pyjama’s. We include those people working in our supply chains too, and anyone who works within our offices, all retailers and people working in the shops. So, it’s for anyone connected to ESSENZA HOME in any way. We can only ensure a good nights’ sleep when we produce in a sustainable manner with eye for both people and the environment. When everyone in our chain is treated fairly, can do their job safely and is paid a living wage for their labour. That’s why we work hard towards an honest and sustainable future. That has become our vision: we strive towards a financially healthy business with eye for both people and the environment.

## Our focuspoints

Going forward from the roundup of our participation in The Dutch Agreement on Sustainable Garments and Textiles we’ve established eleven different focus points, divided over three themes.

### Theme 1: Chain transparency

Producing from a distance can be subjected to risks, as we are not present ourselves to monitor the process. Every link in the chain adds value to our products but has an impact on both people and the environment at the same time. We work hard to reduce this impact and are making sustainability a core concept throughout the entire production chain. It is therefore essential to know which route our products take, from raw material to product in our warehouse and finally to the consumer. In essence, this is the imperative foundation from which we deal with all our focus points.

### Theme 2: Impact on people

There are many people involved in our production processes. This makes it even more important to be as much informed as possible about the wellbeing of those working within our supply chain. We do so by focussing on the following points: rights to freedom of association, forced labour, child labour, discrimination and gender, living wage, health and safety in the workplace & long-term partnerships.

### Theme 3: Impact on the environment

The textile industry has a huge impact on the environment. Within the production process, raw materials are sourced, processed, treated, and transported. This imposes various adverse risks for the environment, which we divided into focus points so that we can closely monitor them and actively implement policies. We focus on water usage, energy & chemicals, sustainable products, product safety, purchasing practices and animal welfare.



#### Theme 1 Chain transparency

- Chain transparency
- Buying practices



#### Theme 2 Impact on people

- Safety and a healthy work environment
- Forced labour
- Right of Freedom of Association
- Living wage
- Long term relationships



#### Theme 3 Impact on the environment

- Sustainable product
- Animal welfare
- Product safety
- Use of water, chemicals and energy

**Scan the QR code if you want to read more about our sustainability journey**



### PVC-free packaging

At ESSENZA we are well on our way to making all our packaging 100% PVC-free. PVC is not recyclable and can contain harmful substances. All duvet covers are packaged in a fabric bag with a paper sleeve around it. The fabric bag can be reused for all kinds of purposes that the customer can decide for themselves, great for the environment and great for the customer! On our website we share some lovely ideas to help the customer get started.

To prevent the products from being damaged during transport or in a warehouse, we still envelop them in a recyclable, PVC-free plastic bag. These are removed before they are presented in the store.

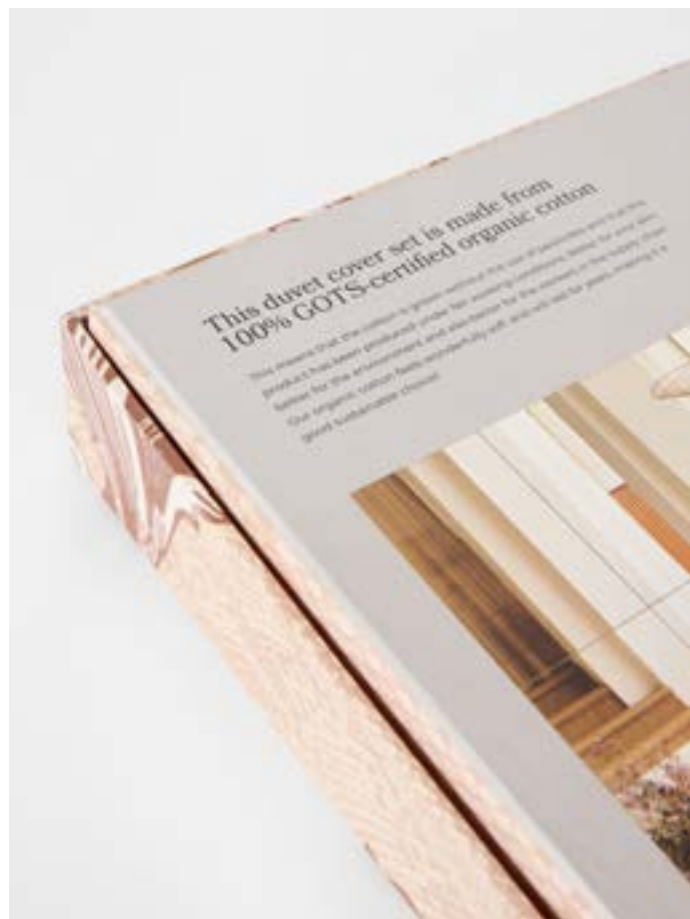
ESSENZA's premium duvet covers come in a luxury storage box made from FSC®-certified cardboard.



*Premium packaging*



*Signature/Seasonal packaging*





# Credits

A special thank you to everyone who has lent us his/her beautiful product/item. This embraces and intensifies the feeling we want to create with our collection and it completes the story. It's all about the details!



**ZIGZAG KRUKKEN**  
Carice van Houten  
[www.polspotten.com](http://www.polspotten.com)



**MODULAIR A-ROUND-U POUF**  
[www.polspotten.com](http://www.polspotten.com)



**VASE**  
[www.nationaalglasmuseum.nl](http://www.nationaalglasmuseum.nl)



**STONEWARE BIJZETTAFEL CHROME**  
HK LIVING  
[www.hkliving.com](http://www.hkliving.com)



**FRAMED RELIEF ART PANEL SAND XL**  
HK LIVING  
[www.hkliving.com](http://www.hkliving.com)



**BENCH 'CHARLIE'**  
[www.sofacompany.com](http://www.sofacompany.com)



**VASE**  
[www.nationaalglasmuseum.nl](http://www.nationaalglasmuseum.nl)



**VASE**  
[www.nationaalglasmuseum.nl](http://www.nationaalglasmuseum.nl)



**LAMP FOREST**  
 Bishop  
[www.portaromana.com](http://www.portaromana.com)



**FAUTEUIL 'BABETTE'**  
 MARK COBALT BLUE  
[www.sofacompany.com](http://www.sofacompany.com)



**POUF 'HONEY'**  
 FIRENZE BUBBLE GUM  
[www.sofacompany.com](http://www.sofacompany.com)

# Colophon

ESSENZA® is a registered trademark of ESSENZA HOME Bunnik - The Netherlands. This brochure is published by ESSENZA HOME and serves as an image catalog. Images can sometimes differ, ranges are non-binding and without obligation. All prices mentioned in this book are Suggested Retail Prices. Marketing & Sales by ESSENZA HOME. We refer to our selective distribution guidelines. Errors and changes excepted. No part of this publication may be reproduced, stored in a retrieval system or transmitted in any form or by any means, electronic, mechanical, photocopying, recording or otherwise, without the prior permission of ESSENZA HOME changes in colors and styles with reservation.

## Contact

### INTERNATIONAL

ESSENZAHOME.com  
info@essenzahome.com  
+31 (0)30 304 1500

### GERMANY, AUSTRIA & SWITZERLAND

ESSENZAHOME.de  
info@essenzahome.de  
+49 (0)286 18 11 64-0

### FRANCE

ESSENZAHOME.fr  
info@essenzahome.fr  
+33 (0)782 14 17 41

### EASTERN EUROPE/MIDDLE EAST

ESSENZAHOME.com  
info@essenzahome.com  
+31 (0)30 304 1500

### CANADA

ESSENZAHOME.com  
www.textilecity.ca  
archie@textilecity.ca  
+1 (0)905 817 1300 ext. 248

## Sales

### DENMARK

EUROTEx  
eurotex.dk  
eurotex@eurotex.dk  
+45 (0)40 25 00 97

### ITALY

MUM S.R.L.  
DISTRIBUZIONE TESSILE  
mumsrl.it  
info@mumsrl.it  
+39 (0)434 63 33 15

### FINLAND & BALTICS

MAGASIN LARECO FRIEND OF BRANDS OY  
magasin.nu  
nina@magasin.nu  
+358 403 567 830

## Photography

### Interior

**ALEXANDER VAN BERGE**  
www.alexandervanberge.nl

### Models

**NINE IJFF**  
www.ijffphotography.com

## Styling

### Interior

**YVONNE TEIJGEMAN**  
www.teijgeman.com

### Models

**MAARTJE VAN DEN BROEK**  
www.maartjevandenbroek.nl







ESSENZA